



TODAY

... to protect the land forever | November 2021

Advocating for a healthy, resilient landscape at SDC

DONATE NOW



Two recent public meetings on the future of the Sonoma Developmental Center (SDC) turned out hundreds of community members unified in their message: The three redevelopment alternatives proposed by Sonoma County for 1,000+/- new homes and millions of square feet of commercial and “R&D” space do not adequately protect the Sonoma Valley Wildlife Corridor and the health of the surrounding landscapes. In response, Sonoma Land Trust submitted a comment letter proposing that a new approach is needed for planning a future for SDC. Rather than purely a financial feasibility calculation of how many houses must be built to offset a \$100 million cleanup liability for the State, our proposal includes performance standards for wildlife corridor protection, fire preparedness and water quality protection. With good science and community input, it is possible to meet the State’s public health, climate, clean energy, wildlife conservation and natural resource protection goals, while also reaching affordable housing targets.

For more information, visit our [Transform SDC blog site](#).

Update Sears Point levee & trail



The recent atmospheric river provided an early test for our Sears Point Living Shoreline project. Though we are incorporating some modifications, the site performed well and it’s looking like the Eliot Trail will be open in time to take a winter solstice hike! [Watch this page](#) for when the trail reopens.

Tues., Dec. 14, 6–7pm Pole Mountain guided virtual hike



SDC

Sonoma Land Trust thanks [the Gordon and Betty Moore Foundation](#) for a generous grant of \$176,500 to support scientific and other research to establish specific wildlife and habitat protection criteria for SDC. Having more detailed information on the wildlife flow and sensitivities of the corridor will help advance appropriate development (especially of affordable housing) on the campus by providing clear parameters protecting this vital link of the Sonoma Valley Wildlife Corridor on the SDC property.

Be among the first to have your gift matched this #GivingTuesday!



We're excited to announce that, for the first time ever, we're able to match your gift up to \$100,000 on #GivingTuesday thanks to Simon and Kimberly Blattner. Give early – anytime from now until midnight on December 1 – and see your generosity double. When you join #GivingTuesday and donate today, your gift will be counted toward the End-of-Year \$1.3 Million Challenge and make a tremendous impact. Despite the many challenges Sonoma County faced again this year, you helped protect land for clean air, water, wildlife and to help buffer our communities from the impacts of climate change. This #GivingTuesday, we're able to double your donation, which helps implement nature-based solutions to make a more resilient Sonoma County.

DOUBLE MY DONATION

Hello and good-bye

guided virtual nature experience of Pole Mountain. We'll "hike" up the north side of Pole Mountain, reach the summit for amazing 360-degree views, and then hike down the south side, ending at the Jenner Headlands.

[Register here](#)

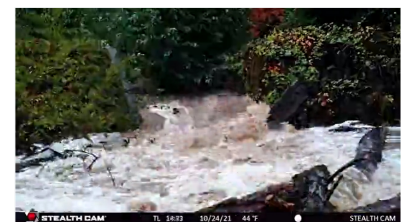
There is no charge for this event, which is made possible by the voters of Sonoma County who fund the work of Ag + Open Space with a quarter-cent sales tax.

Join us on TikTok!



We have begun sharing short wildlife and other videos on the social media platform [TikTok](#) and invite you to join and [follow our page](#). Here's a hint: You'll be 'beary' happy you did!

Stuart Creek timelapse



Stuart Creek flows across four of our Sonoma Valley preserves and we have been working for many years to restore fish habitat in it. In 2014, we reconfigured Glen Oaks' historic dam to allow steelhead to pass upstream

our team



Ariana Rickard has joined the Sonoma Land Trust in a brand new position: public policy and funding program manager. In this role, she will work with state and federal agencies and legislators to ensure that the Land Trust's programs and projects receive adequate government funding and support. Ariana's experience in advocacy stems from her time as political director at TOGETHER Bay Area and with the San Francisco Bay Joint Venture, where she was the staff lead for the government affairs committee. She has also worked for several federal government agencies, including the Peace Corps in Ecuador, and numerous environmental nonprofits, such as Audubon California. Ariana earned her BA from Harvard College in environmental science and public policy and her MS from the University of Michigan, Ann Arbor, with a focus on ecology. In 2020, she co-founded the Bay Area chapter of Environmental Professionals of Color to increase equity, diversity and inclusion within the Bay Area's environmental community. *Welcome, Ariana!*

Saying good-bye to our longtime communications director

VIDEO FROM THE RECENT STORM shows, the dam can also handle high flows!

[Watch it here](#)

Not-to-be-missed recording on SDC & wildlife corridor



On Nov. 9, Eamon O'Byrne and John McCaull provided a virtual presentation on SDC and the Wildlife Corridor to more than 200 viewers who were so highly engaged that they asked more than 70 questions! If you missed it, be sure to [watch it here](#).

Our fall newsletter



PIONEERING A NATURE-BASED SOLUTION FOR SHORELINE EROSION AT SEARS POINT

Imagine if we had known in 2007 that a devastating fire would tear through Sears Point in 20 years time and that the world would become an annual concern for all of us. What might we have done during that decade to anticipate and adapt?

The most recent report from the Intergovernmental Panel on Climate Change leaves no doubt that the effects of climate change are already here. Not only must we reduce emissions,

but we need to urgently begin adapting and becoming resilient to what is happening now as well as to the inevitable future. This Sonoma Land Trust has reallocated its efforts to conserve and restore 10,000 acres within the Sonoma Redwoods along San Pablo Bay. Besides providing habitat, sequestering and storing carbon, filtering pollution, and contributing greatly to our economy and well-being, tidal wetlands are our best defense against sea-level rise.

Continued on page 4

If you didn't receive it in your mailbox, please [read it here!](#)

SLT in the news



After 14 years at Sonoma Land Trust, communications director [Sheri Cardo](#) is leaving to enjoy a few adventures and pursue new career opportunities. “Sheri has been a stalwart colleague and friend, and has contributed so much to our mission,” says executive director Eamon O’Byrne. “Her management of the local press has been masterful and, when she calls, editors drop everything and listen. Those of us who got to work beside Sheri on a daily basis will miss her warmth and ready smile, and ability to bring much needed humor to the (all too often) deadly serious business of conservation.” Sheri says, “It has been a tremendous privilege to work for this organization. Know that I will be cheering from the sidelines as Sonoma Land Trust becomes ever more pivotal to life in this region.” Her last day in the office will be December 17.

Conservation Corps North Bay stewardship at Pole Mountain

BREAKING NEWS

Sonoma Land Trust is A Force for Nature, and you can be too, when you [support the campaign](#). In these recent news articles, learn how your support helps the organization protect important landscapes and employ nature-based solutions.

Press Democrat

[Close to Home: SDC plan must protect wildlife corridor](#)
by Eamon O’Byrne

Sonoma Index-Tribune

[Concerns over how to protect major wildlife corridor through Sonoma Developmental Center](#)

Kenwood Press

[Dense development plans for state land provoke harsh responses](#)

KRCB Radio

[A rare look inside as county plots future of nearly 1,000-acre Sonoma Developmental Center](#)

San Francisco Chronicle

[Rising tides are cutting into restored wetlands on San Pablo Bay](#)





Thanks to the generous support of the State Coastal Conservancy's Wildfire Resilience Program, Conservation Corps North Bay crews worked to address regrowth within shaded fuel break treatment areas at Pole Mountain Preserve. Crews used hand tools and chainsaws to provide follow-up treatment of multi-stem resprouts of bay and madrone, address sudden oak die-off afflicting tanoaks and remove Douglas fir conifer encroachment of oak woodlands within established treatment areas. This shaded fuel break project along the ridgetop ranch road is the foundation of our forest health and fire resiliency efforts, and also serves as an important community safety access corridor.

Questions or comments? Email Sheri Cardo, managing editor.
Copyright 2008-2021 Sonoma Land Trust. All Rights Reserved.