



TODAY

... to protect the land forever | November 2020

We're thankful for you!



As we prepare for the holidays and reflect on this tough year, we want to express our gratitude to you for everything you've helped us accomplish despite the difficulties. Thanks to you and our community of supporters, we've added hundreds of acres of critical habitat and parkland, and advanced our fire and floodplain strategies in the Sonoma Valley and Baylands. Our staff was so inspired by your support over this most challenging year that they made this video of thanks for you. We hope you'll enjoy learning about the essential work you helped make happen. We simply couldn't do any of this without your partnership and support. If you're able to this holiday season, please join us in the \$1.2 million Challenge for Nature so that we keep on making Sonoma County a healthy, thriving place for all our communities.

[Donate](#)

"The Russian River and Its Watershed" book release party Dec. 11 — you're invited!

With original paintings by Richard McDaniel

[DONATE NOW](#)

December 1 is #GivingTuesday



This #GivingTuesday, have your gift tripled! On December 1, generous donor, Mary Love, will match your gift two to one up to \$25,000. Give to the land you love and see your generosity tripled.

[Give](#)

SLT in the news New Petaluma park



Your land trust is helping an ambitious nonprofit in Petaluma ensure that all voices from the community are involved in creating a new riverfront park.



The 110-mile Russian River flows like a ribbon of silver through the valleys of Mendocino and Sonoma counties, providing drinking water, a home for fish and other riparian critters, and irrigation for thousands of acres of farmland. But only people who live on its banks or who regularly spend time on its waters can attest to the unique and varied beauty of the Russian River. Sonoma Land Trust and [Sonoma Water](#) have partnered with local artist [Richard McDaniel](#) on a stunning display book about the river and its watershed. The 41 full-color paintings by McDaniel that comprise the heart of *The Russian River and Its Watershed* portray a river of many colors, moods and seasons. The voices of local essayists (including author and tribal leader Greg Sarris and historian Gaye LeBaron) add their own color to the book. From a sighting of a single osprey to a real-life fish story to a life-changing canoe trip, the stories told by the authors are as varied as the river itself.

We invite you to join us for the free online book release party Friday, December 11, from 4:30–5:30pm.

[Learn more here](#)

Congratulations, Sara!

Wendy Eliot's legacy



Press Democrat reporter Guy Kovner did a wonderful job capturing the significance of Wendy Eliot's 21 years at Sonoma Land Trust.

[Read story here](#)

Job announcement

We're currently seeking a topnotch, conservation-loving Senior Accountant. Please help spread the word!

[More info here](#)

Take a hike! Virtually, that is



Miss getting out on our lands? Join us for an interactive virtual hike! You'll enjoy a brilliant display of imagery as we guide you through the landscape. Shot in high-definition video, you'll almost feel the sun and the breeze. This month, we're featuring Glen Oaks Ranch in Sonoma Valley — its rich



Land acquisition program manager Sara Press has been promoted and “conservation strategy” has been added to her title and portfolio. This means that, in addition to her work in the Russian River watershed and along the coast, Sara is now serving as the Land Trust’s lead conservation planner. Sara has extensive experience in the conservation strategy and planning field, including 10 years at Sonoma County Ag + Open Space. We are thrilled to have her leading our focus on the most important challenges for nature and ensuring that your support is accomplishing effective and impactful results. *Hats off to Sara!*

Bringing back agriculture to Laufenburg Ranch



Our Laufenburg Ranch Preserve, along the northern edge of Calistoga, has a long history of farming. This fall, following the destructive wildfires in the area, we partnered with a rancher from our neighboring preserve, whose pastureland was devastated by the recent fires, to bring livestock grazing to Laufenburg Ranch. This mutually beneficial arrangement allows us to actively manage the grasslands and provide much-needed fodder for our partner’s cattle. Well-managed grazing on the preserve will not only promote a biologically diverse grassland, reduce the risk of fire and protect the

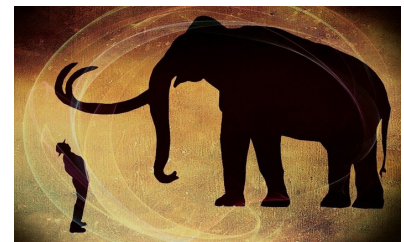
the recovery. Spots are limited.

[Sign up today!](#)

There is no charge for these virtual hikes, which are made possible by the voters of Sonoma County who fund the work of Ag + Open Space with a quarter-cent sales tax.

The California Serengeti

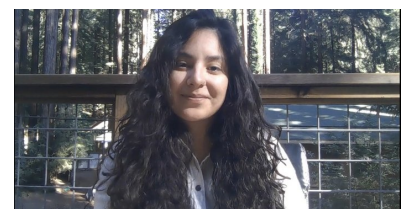
Tues., Dec. 15, 7pm; free



18,000 years ago, what is now San Francisco Bay was a wide, grassy valley teeming with herds of mammoth, mastodon, camel, horse and more. No kidding! Join archaeologist Breck Parkman on December 15 for a tour of the magnificent California Serengeti.

[Register here](#)

Impact100 helps us connect you to nature



Since the start of the pandemic when we all needed nature the most, the support from funders and donors, like Impact100, have boosted our ability to continue to creatively

wishes of the late landowner, Charlie Ludenborg, who donated this ranch to Sonoma Land Trust.

nature.

Gift memberships to save land



This holiday season, share your love of the land by giving your loved ones the gift of membership to Sonoma Land Trust. You can choose from a variety of beautiful online gift cards, too!

[Select here](#)

[Watch this video to learn more](#)

[Connect to Nature at home](#)



Questions or comments? Email Sheri Cardo, managing editor.
Copyright 2008-2020 Sonoma Land Trust. All Rights Reserved.