



# TODAY

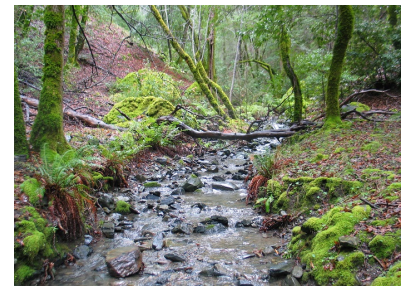
*... to protect the land forever | June 2020*

## A message from our executive director, Eamon O'Byrne



As we tentatively emerge from lockdown, mindful that COVID-19 is still with us, I am filled with gratitude for the beautiful protected lands that so many people, past and present, have made possible. The past three months have been a powerful reminder that nature is there for us when we need her most. We've also learned that we in the conservation movement need to redouble our efforts to

## Support the land you love



Science shows that being in nature improves mental and physical health. Sonoma County has so much to offer and we're thankful that parks and open spaces are now open. Whether you're visiting the coast, the river, redwoods, the bay, or other cherished spots, **we ask you to donate to our Summer Solstice Drive.** When you donate, you're joining our efforts to protect and restore more land than ever before.

[DONATE NOW](#)

## Sonoma Land Trust believes Black lives matter

Sonoma Land Trust stands in solidarity with and supports the Black community and the unique challenges facing Black lives. We are still early in the process of

communities to enjoy.

Navigating a new normal being shaped by the pandemic, we will need all our public lands (and more of them) to protect the mental and physical health of our communities in the years ahead. We'll also need them to secure clean water supplies and clean air, and help reduce the impacts of climate change, by using science-based land management techniques like those being used by the Sonoma Valley Wildlands Collaborative.

This multi-partner effort to reduce the risk and severity of wildfire that Sonoma Land Trust helped to launch is designed to alleviate those risks across 18,000 acres of protected land. Fire is a natural process, but climate change and a dry winter mean that we may in for a tough fire season this year, and this work is one of the ways that your land trust is working for the health and safety of our communities, both human and ecological.

I hope that you and your families will get to enjoy the outdoors this summer and forge ever deeper connections with nature!

## Fire and wildlife at Live Oaks Ranch



In preparation for fire season, we completed our annual trail and fire abatement mowing on several of our preserves, including [Live Oaks Ranch](#) in Knights Valley. Weed whipping and mowing are routine practices used to manage vegetation, but fast-growing grasses are also home to many nesting birds and other wildlife. Ground-nesting birds, who lay their eggs and raise their young in tall grasses and thickets, are especially vulnerable to the impacts of mowing. Before mowing at Live Oaks, we surveyed the area for potential nesting sites by observing bird behavior,

access to nature and, with the help of community partners, we created a [DEI Plan](#) to help us identify actions to tackle these issues and hold ourselves accountable.

[Read full statement](#)

## Spring newsletter

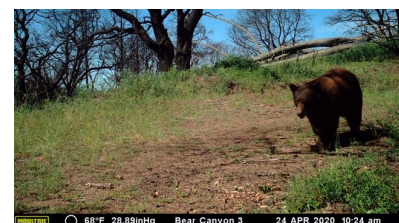


It's here! Our first virtual (and interactive) quarterly newsletter! In the Spring 2020 issue, you'll learn about four upcoming land acquisitions, our new virtual program offerings, the legacy of some special donors — and much more! Click below to read on desktop or mobile. We hope you enjoy it. 😊

[Read](#)

[Read large type](#)

## Being with bears





an active nest, we created a barrier around it to minimize disturbance. Surveying sites for nesting birds and other wildlife before mowing helps ensure that these species are protected while we work to reduce fuel loads and provide safe trail access.

## A strategy to secure the future of the Sonoma Creek Baylands



We've just completed the Sonoma Creek Baylands Strategy funded by [San Francisco Bay Restoration Authority](#), [U.S. Fish and Wildlife Service](#), [Resources Legacy Fund](#) and [Dolby Family Fund](#) and in partnership with [many local stakeholders](#). The strategy presents a plan for landscape-scale habitat restoration, flood protection and public access in the lower Sonoma Creek watershed between State Route 121 in Schellville and San Pablo Bay. Recommendations include:

- Coordinating the protection, restoration and enhancement of diverse baylands habitat,
- Integrating natural processes to increase climate resilience in the region,
- Identifying opportunities for public access, and
- Integrating ecological restoration and natural infrastructure goals into the SR 37 redesign process and increased connectivity under and across the SMART rail line.

In developing this strategy, we met with many of the public and private property owners in the study area. We look forward to implementing this shared restoration vision in the Sonoma Creek Baylands!

[Read executive summary](#)

We've got bears right here in Sonoma County! Enjoy our recorded webinar with local ecologist and writer Meghan Walla-Murphy to learn about bears and how we can cultivate a local bear culture in order to live in harmony with this keystone species.

[Watch presentation](#)

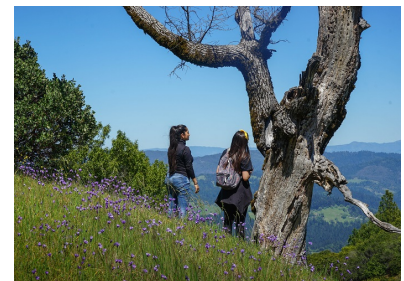
## SLIME for kids



Calling all kids! Come spend time with us along the salt marsh (virtually) with this free presentation from our SLIME program. We cover topics such as ecosystems, biodiversity, natural resources and conservation. Bring your imaginations — no materials required!

[Enjoy](#)

## Join our Conservation Council



Do you know someone who is passionate about the outdoors or wants to contribute to conservation efforts? We're seeking teens ages 14-18 interested in the environment to assist in the

Share this Page: 

powered by 



research program.

[Learn more](#)

DONATE NOW



Questions or comments? Email Sheri Cardo, managing editor.  
Copyright 2008-2020 Sonoma Land Trust. All Rights Reserved.