



# TODAY

*... to protect the land forever | July 2018*

## Supervisors introduce Regional Parks measure



On July 10, the Sonoma County Board of Supervisors voted unanimously to introduce an ordinance to place a 1/8<sup>th</sup>-cent sales tax measure for regional and local park improvements on the November 6 ballot. The Board will consider adopting the ordinance on August 7. The sales tax will support the county and cities with long-term needs to maintain parks, protect natural resources, reduce wildfire risks, provide health and recreation programs, and open new parks and trails. Last night, Sonoma Land Trust's board of directors authorized us to campaign in support of the measure. If approved in November by two thirds of voters countywide, the tax would generate \$11.5 annually for 10 years, with \$7.6 million going to Regional Parks and a total of \$3.8 million to the county's nine cities.

"Passage of this funding measure will help us do our job, too," says executive director Dave Koehler. "The Land Trust regularly acquires property with the goal of transferring the land into our county's amazing parks system, and this will give Regional Parks the funds they need to steward and manage lands that we purchase for them." Stay tuned for more on this key issue.

[Learn more here](#)

## Children enjoy year two of Bay Camp

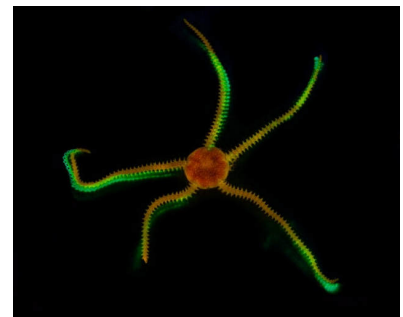
DONATE NOW

### Congratulations, Ingrid!



We are happy to announce that outings manager Ingrid Stearns has been promoted to On the Land program manager! Since she joined Sonoma Land Trust in 2011, the On the Land program has grown considerably under her management to include outings and hikes, lectures and workshops, Bay Camp and the Sears Point docent program.

### A naturalist's fireworks



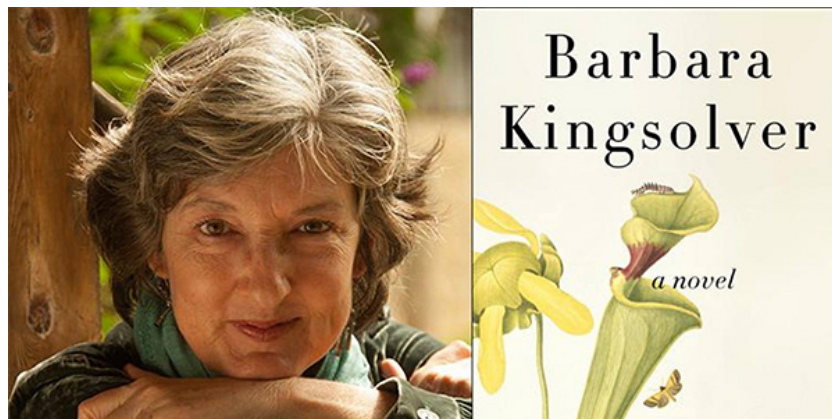
Missed fireworks on the fourth of July? Don't worry

We've just completed the second year of our bilingual [Bay Camp](#)! Fifty youngsters from the Sonoma Valley Springs area – the majority of whom received a scholarship – got to enjoy new experiences over these past three weeks exploring along the bay and other waterways of Sonoma County. New this year was an “Adventure Week” for youth 12–14, in which the kids explored the county by kayak, paddling as much as eight miles in one day! A huge thanks to our grantors and donors, including the [California Coastal Conservancy's Explore the Coast](#), [Community Foundation Sonoma County](#), [Vadasz Family Foundation](#), [Joanne Dow](#), [The K.A. Zankel Foundation](#), [AmeriCan Adventures](#), [Innovative Screen Printing](#) and others; our partners [La Luz Center](#), [Sonoma Valley Mentoring Alliance](#), [Teen Services Sonoma](#) and the [San Pablo Bay National Wildlife Refuge](#); our volunteers, our high-spirited campers, and others for a fascinating and fun second year of camp.

[Enjoy photos from this year's Bay Camp](#) (by Corby Hines)

## Barbara Kingsolver is coming to Sonoma County!

### Land Trust co-hosts event with Copperfield's



We are excited to announce that [Copperfield's Books](#) has invited us to co-sponsor an upcoming presentation by author Barbara Kingsolver. Please join us October 24 at the Sebastopol Community Cultural Center to hear Kingsolver discuss her new book, “Unsheltered.” The New York Times bestselling author has written nine acclaimed works of fiction, including “The Poisonwood Bible” “Animal Dreams” and “The Bean Trees.” According to Copperfield's, “Unsheltered” is the story of two families, in two centuries, as they navigate the challenges of surviving a world in the throes of major cultural shifts (sound familiar?). In this mesmerizing story told in alternating chapters, the main

covered. Check out [Kate Freeman's](#) comprehensive guide to naturally occurring “fireworks” right here in Sonoma County!

[Read it here](#)

### SLT in the news



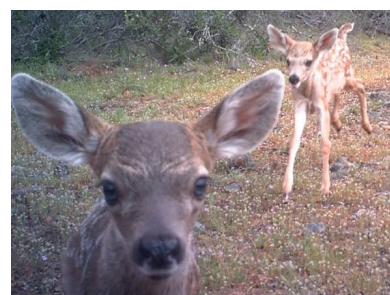
Sonoma Land Trust was featured in the following three stories about fire recovery in the [Press Democrat's](#) June “Rebuild North Bay” section:

[Residents, landscape scarred by fire in Mayacamas](#)

[Sonoma County's wildlife makes impressive rebound after fire](#)

[Charred Sonoma County landscape tells of October fires' complex toll](#)

### We heard you!



Big thanks to the 950 (!!) people who shared their thoughts about Sonoma Land Trust in our spring survey. One thing is clear: You love healthy ecosystems

uncertain, shelter can be found in the bonds of kindness (whether family or friends) and in the strength of the human spirit. Ticket purchases include a copy of “Unsheltered.”

This event will sell out so be sure to get your tickets early.

[Buy tickets](#)

## Cheers to the happy couple!



*Bob and Louisa on their wedding day.*

Please join us in congratulating our longtime stewardship director, [Bob Neale](#), and his new wife, Louisa Morris, who tied the knot in New York last weekend. Sonoma Land Trust can take credit for bringing these two together as Louisa is also a member of the Land Trust community, having served as a consultant to our organization and also on the staffs of Mendocino Land Trust and now the Bay Area Ridge Trail. Wishing a lifetime of wedded bliss to these two special people!

Other insights are helping to shape our future membership program. Stay tuned to see the impact of your input.

## Seeking an internship?



Sonoma Land Trust has a few openings for interns this fall. Join us on our hikes as an outings intern, apply your skills at land stewardship or work with our development team to generate support for our programs. College students receive credit as well as a stipend.

[Learn more](#)



Questions or comments? Email Sheri Cardo, managing editor.  
Copyright 2008-2018 Sonoma Land Trust. All Rights Reserved.