



TODAY

... to protect the land forever | December 2020

Look what you've helped us achieve – thank you!

[DONATE NOW](#)



While this past year has been incredibly difficult, it's important to highlight the accomplishments Sonoma Land Trust has made in 2020 thanks to your support. You've helped us protect wild places like the Gloeckner-Turner Ranch, and soon-to-be urban parkland, like Cooper Creek; as well as preserve biodiversity, which helps animals and plants adapt to climate change; reduce wildfire risk to Sonoma Valley; and bring nature into people's homes when we couldn't get out on the land.

Looking forward to 2021, we are committed to increasing community access for all to the outdoors, reducing the risk of fire and flooding to our communities, and protecting more land for clean air and water. We need your support to implement nature-based solutions to the challenges we face and that is why we are asking you to join us in our \$1.2 Million Challenge for Nature. Your gift will help leverage additional funding and have a critical impact in the year ahead. If you're able to donate – thank you!

Please note that any charitable contributions you make for the rest of the year are eligible for a 100% tax deduction under the CARES Act.

Virtual hiking up Pole Mountain!



Join us in January for an interactive, guided, virtual nature experience of Pole Mountain. We'll "hike" up the north side of Pole Mountain, reach the summit for amazing 360-degree views, and then hike down the south side, finishing at the Jenner Headlands. Group sizes are limited to mimic the experience of being out on the land together.

Dates & registration

There is no charge for these events, which are made possible by the voters of Sonoma County who fund the work of Ag + Open Space with a quarter-cent sales tax.

Land Trust news

What we know now about fire impacts on our protected lands



Our beautiful Nefertierra property burned extensively in the Glass Fire.

We've received a little rain over the last week, which, hopefully, brings the 2020 fire season to a close. Our hearts remain with the people who have suffered from what we now know as "fire season." While only one Land Trust preserve burned in the recent fires, eight properties protected by conservation easements, covering more than 500 acres, burned this year. Four of our conservation easement landowners lost homes and buildings as a result. We have offered support through technical advice and critical information about financial and expert assistance to help them recover quicker. Conservation easement landowners are important partners in protecting Sonoma County's natural and agricultural resources. As we expand our efforts to manage our lands so they are more resilient to climate change, fires and floods, we will work with our partner organizations and individuals to share information and experience that will benefit our entire community.

[See story map on the Glass Fire impacts on our State Park lands](#) *Link is at top left.*

An important grant for Petaluma's new park



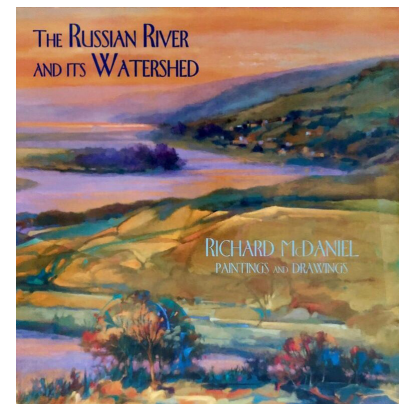
Check out the feature story about nature programs for young people in the winter newsletter, which should be just arriving in your mailbox.

[Read it here](#)

More news about what your donations make possible can be found in the annual report, which was published last month.

[Find it here](#)

Celebrating the River



The book release party for "The Russian River and Its Watershed" was great fun. If you missed it, you can enjoy it [on our YouTube channel](#). Books are still available for purchase.

[Click here to order](#)



A big thank you to the Peter E. Haas Jr. Family Fund for providing a generous grant for the creation of a community engagement plan to create a new park in Petaluma. Sonoma Land Trust and the Petaluma River Park Foundation (PRPF) will lead this effort, along with a coalition of local organizations. The goal is to ensure that voices from the entire community are included in the creation of this new “urban” park on McNear Peninsula. We look forward to engaging with the partner organizations, which are knowledgeable in everything from conservation and planning to education, public art, health, housing and community building. The plan we create together could serve as a model for designing urban parks throughout the county. Our deepest appreciation to the Peter E. Haas Jr. Family Fund for the many ways they support Sonoma Land Trust and our community.

[Learn more about Petaluma River Park](#)

PRPF is hiring!

The Petaluma River Park Foundation is hiring a contract project associate to help with the creation of the community engagement plan for the new Petaluma River Park. Applications are due January 10.

[More info](#)

Winter Abundance — Turkey Tails to Miner’s Lettuce

Thursday, January 28, 7-8:30pm

in next Sunday's Press Democrat.

Share your love of the land



Looking for a last-minute gift for the holidays? Share your love of the land by giving a Sonoma Land Trust membership. You can choose from a variety of beautiful online gift cards that include a special, personalized message from you to your friends or family.

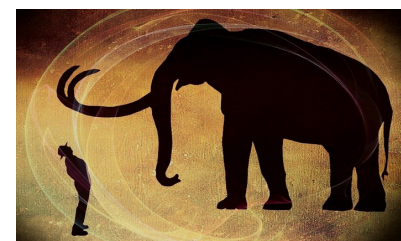
[Share here](#)

ICYMI — recent talks



Fall Hawk Migration with Larry Broderick

[Watch it here](#)



The California Serengeti with Breck Parkman

[Watch it here](#)



Spend the evening learning about the winter and early spring treasures of our local native and naturalized flora and fungi to include in your wellness kit and kitchen pantry. From soups to smoothies, adding these plants and fungi to our diets nourish us in body and spirit by deepening our connection to place. This includes turkey tail mushrooms, stinging nettle, usnea lichen and the often overlooked and maligned “weeds”: dandelion, milk thistle and mallow. We will cover how to identify, sustainably gather and prepare this seasonal abundance.

From her first herb class over 25 years ago, Autumn Summers has been exploring the many facets of herbalism with a focus on plant, seaweed and mushroom identification and uses, and growing medicinal and edible plants. Currently, she is the lead educator at Herb Pharm and a core faculty member at the California School of Herbal Studies. She is passionate about sharing this empowering knowledge with others in an enthusiastic, hands-on way.

[Register here](#)

[Source story.](#)

#GivingTuesday results

Thank you to the 220+ supporters who donated to Sonoma Land Trust on #GivingTuesday! Your generosity combined with the wonderful matching gift donated by Mary Love allowed us to raise over \$100,000. You are making an impact and helping us increase the pace of our work when we need it most. There's still time to give to our year end \$1.2 Million Challenge for Nature – your support is critical to climate action and can also help leverage additional funds.

[Donate now](#)





QUESTIONS OR COMMENTS?

Questions or comments? Email Sheri Cardo, managing editor.
Copyright 2008-2020 Sonoma Land Trust. All Rights Reserved.