



# TODAY

... to protect the land forever | April 2021

## We've acquired Fitzsimmons Ranch to add to Hood Mountain Regional Park!

[DONATE NOW](#)

### Guided virtual hikes: spring wildflowers



*A view of San Francisco from the top of Fitzsimmons Ranch. Photo by Scott Hess Photography.*

On Wednesday, we closed escrow on a stunning 200-acre property that was an inholding of private land within the 2,000-acre Hood Mountain Regional Park and Open Space Preserve. Known as Fitzsimmons Ranch, the property has a rich modern history. Homesteaded in 1912 by Max Arthur Fitzsimmons and his wife Maud William Fitzsimmons, the couple received a land grant that was signed by the U.S. President in 1913. While they returned to Santa Rosa to live shortly thereafter, Max, Maud and subsequent generations of their family maintained the ranch for cattle grazing and family visits. It is this faint footprint on the land that made it so compelling to Sonoma Land Trust and Regional Parks, and those who provided the philanthropic support to acquire it: Mary Love, Jake Warner and Toni Ihara, and the Gordon and Betty Moore Foundation. Learn more about this significant acquisition in the articles below.

[Press Democrat](#)

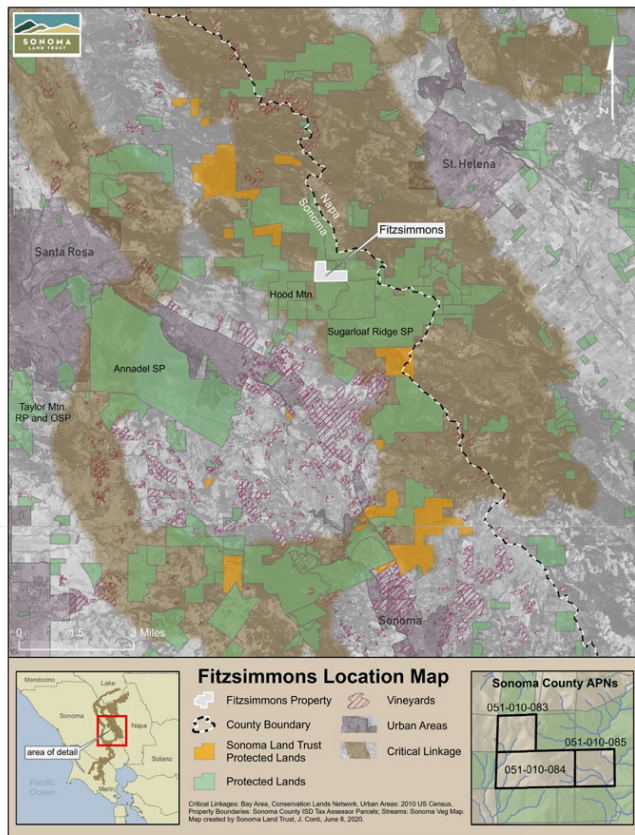


Join us on a virtual journey across the county as we look at the spectacular array of wildflowers, from the Tolay Creek serpentine fields in the east to the Jenner Headlands serpentine meadows on the Sonoma Coast and a few places in between.

[Register here](#)

*There is no charge for these events, which are made possible by the voters of Sonoma County who fund the work of Ag + Open Space with a quarter-cent sales tax.*

**May 16 — New OpenRoad story!**



Mark your calendar for a brand new story about *your* land trust on OpenRoad TV with Doug McConnell: Sun., May 16, 6:30pm on NBC Bay Area. You'll see acquisitions program manager Sara Press and our consultant Tom Robinson talking with Doug about our new Russian River subwatershed strategy to help Coho salmon thrive.

## April is Volunteer Month



*Volunteers after a morning of removing irrigation lines at Tolay Creek.*

## A Force for Nature The Sonoma Land Trust Campaign virtual event launch



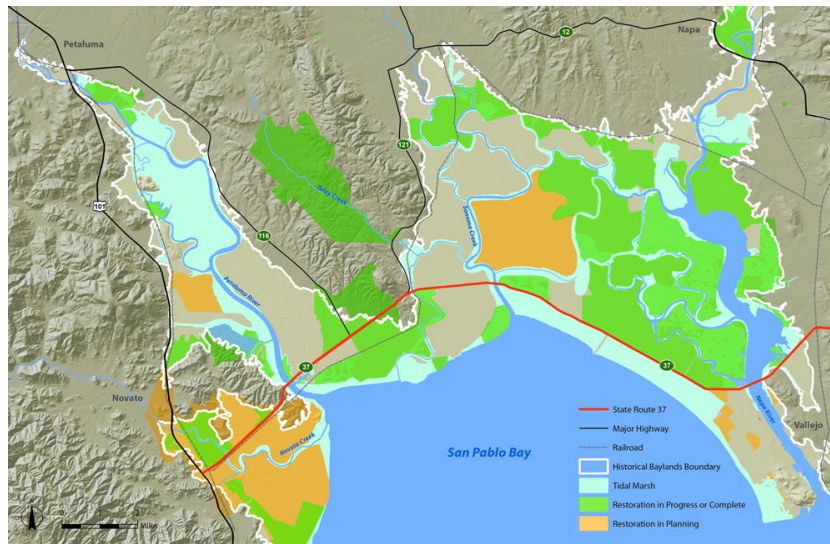
Help us launch the “A Force for Nature” campaign on May 25 at 6pm. You’ll learn how Sonoma Land Trust, with your support, is taking bold action and pairing human resolve with natural resilience to help us adapt to the changing climate. During this fun, interactive, virtual event, you’ll get a sneak peek into the six key solution areas outlined in the Land Trust’s new strategic plan, as well as the campaign that will fund this important work. We will also hear from friends,

April is Global Volunteer Appreciation Month. Much of the work that nonprofit organizations do is accomplished by volunteers. Despite the pandemic, COVID-safe volunteers at Sonoma Land Trust still make an enormous impact in all aspects of our work with their wide-ranging skills and expertise. At Glen Oaks Ranch, our team of trail volunteers keeps the roads and trails open. At Tolay Creek Ranch, volunteers maintain the thousands of native trees planted (largely by volunteers) along the creek.

they're A Force for Nature — like Jim Thompson, a volunteer and donor of the Land Trust, [featured here](#). As a supporter, partner and/or fan of Sonoma Land Trust, you are A Force for Nature, making a tangible impact and tackling climate change at the local level.

[Register Today!](#)

## Joining forces with Sonoma County Transportation Authority for Highway 37



Last week, working in collaboration with Sonoma Land Trust, the Sonoma County Transportation Authority (SCTA) submitted a Member Designated Project request for State Route 37 to U.S. Representative Mike Thompson. SCTA is seeking Thompson's help for \$25 million in funding for highway planning and design, and to purchase key properties in the diked agricultural baylands of Sonoma Creek for conservation and restoration. Both organizations are aligned on this future vision of SR 37. Rebuilding the highway to reduce congestion and increase resilience to flooding will require environmental mitigation under federal and state environmental regulations. If SCTA, Caltrans and the Metropolitan Transportation Commission can fund land acquisition for conservation and restoration now, they will be one step closer to obtaining the permits they'll need to rebuild the highway. Sonoma Land Trust has also obtained letters of support for the request from key partner organizations, including the State Coastal Conservancy, Ducks Unlimited and San Francisco Bay Joint Venture.

## Grant provides new technology to better monitor properties

our dedicated and inspiring board of directors. *Thank you, Land Trust volunteers!*

## A Sense of Place at Bodega Head



Join us June 17, 7pm, for a Language of the Land virtual presentation by Jackie Sones of UC Davis's Bodega Marine Reserve featuring 16 years of photographic highlights to celebrate the natural history of Bodega Head. We'll discuss the benefits of developing a sense of place as well as ideas for connecting with the landscapes and seascapes around us.

[Register here](#)

## Donate your vehicle to save land



It's easy and effective. Through Donate for Charity, you can [donate your car, truck, motorcycle, boat or plane](#) for sale at top dollar. They do the work, you get the deduction and we all get to protect more beautiful places.



*Large and mostly undeveloped properties like the Rancheria Creek Recesses conservation easement may provide excellent opportunities for new remote monitoring methods.*

In partnership with the Land Trust of Napa County, we are excited to be awarded a grant from the Land Trust Alliance and The Nature Conservancy in California to adopt state-of-the-art remote-monitoring technology for our conservation easement and preserve properties. This grant will allow us to create a long-term, collaborative monitoring system to improve organizational efficiencies while simultaneously increasing our stewardship capabilities on some of our more remote properties. In addition, the collaborative nature of this grant allows the two land trusts to share necessary information and management recommendations across organizations and county lines. This increased efficiency and direct connection with our partners increases our ability to continue to do what we do best: Protect our lands forever for the benefit of the community and future generations.

Questions or comments? Email Sheri Cardo, managing editor.  
Copyright 2008-2021 Sonoma Land Trust. All Rights Reserved.