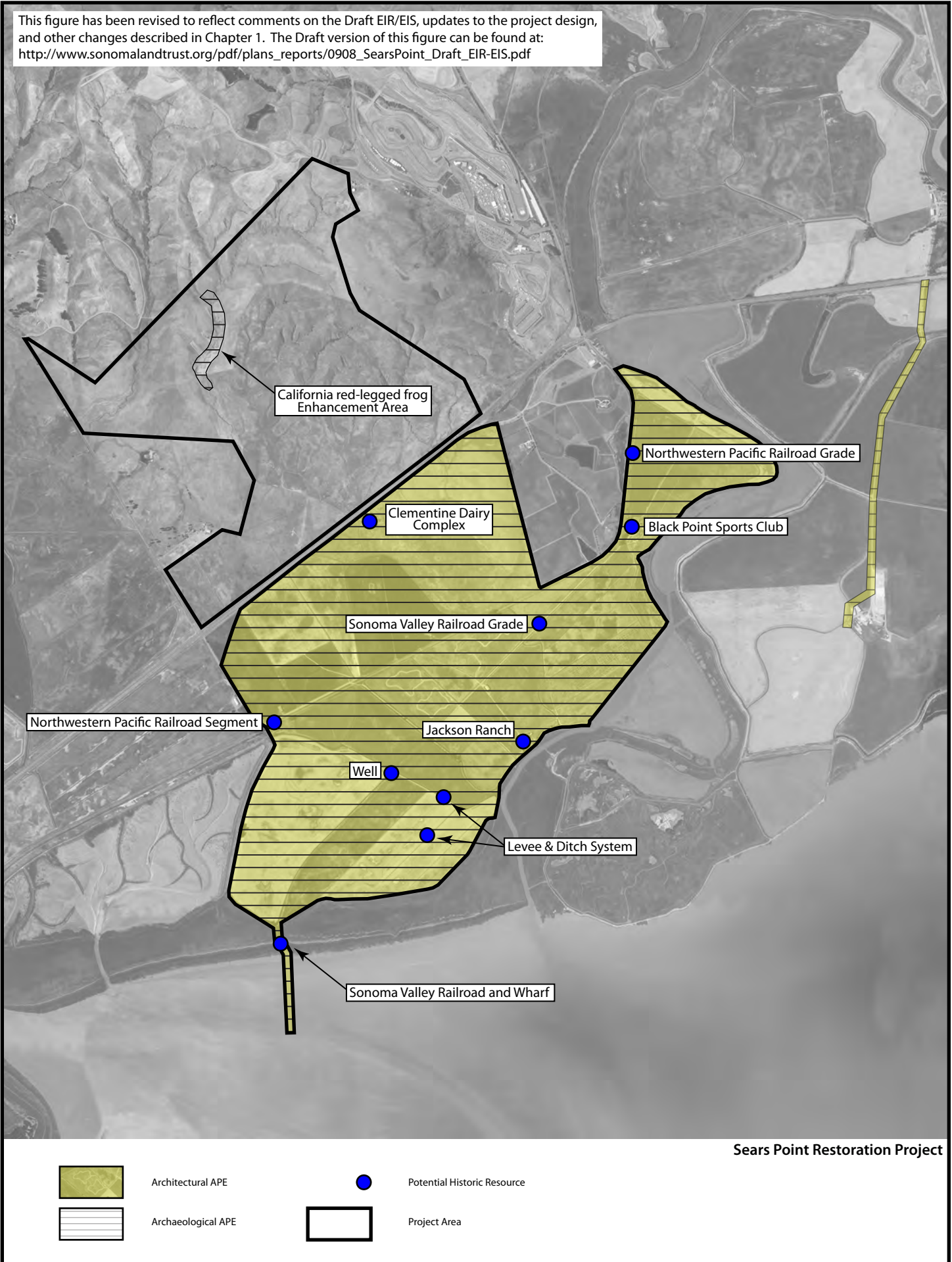


This figure has been revised to reflect comments on the Draft EIR/EIS, updates to the project design, and other changes described in Chapter 1. The Draft version of this figure can be found at: http://www.sonomalandtrust.org/pdf/plans_reports/0908_SearsPoint_Draft_EIR-EIS.pdf



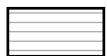
Sears Point Restoration Project



Architectural APE



Potential Historic Resource



Archaeological APE



Project Area