



# ANNUAL REPORT TO THE COMMUNITY

2016-2017



*... to protect the land forever*

Dear Sonoma Land Trust Supporters,

Both trees and people put roots down into land, and it's the land that Sonoma Land Trust is protecting forever. Stewardship of the land has long been a trait in Sonoma County, yet recent decades have brought significant change and more is signaled on the horizon. As critical landscapes in the North Bay counties are threatened, our work becomes even more needed and urgent than ever before.

Our communities want better access to parks and natural lands where individuals and their families can get outside and enjoy healthy lives. We also want to see salmon back in our streams full of clean water and wildlife abounding in nearby forests and meadows. The security of local food for our tables will come only through actions we take now to preserve our farms and ranches.

Today, we are racing against time to adapt to the impact of our changing climate by restoring tidal marshland along San Pablo Bay. These tidal wetlands are so vital to migrating birds of the Pacific Flyway and for providing a buffer to our towns and transportation systems in Sonoma County.

Land is the heart of our community and it is with great appreciation to our generous supporters that we prepare this annual report of our conservation efforts. We are here to serve everyone in our communities and we invite all to join in.

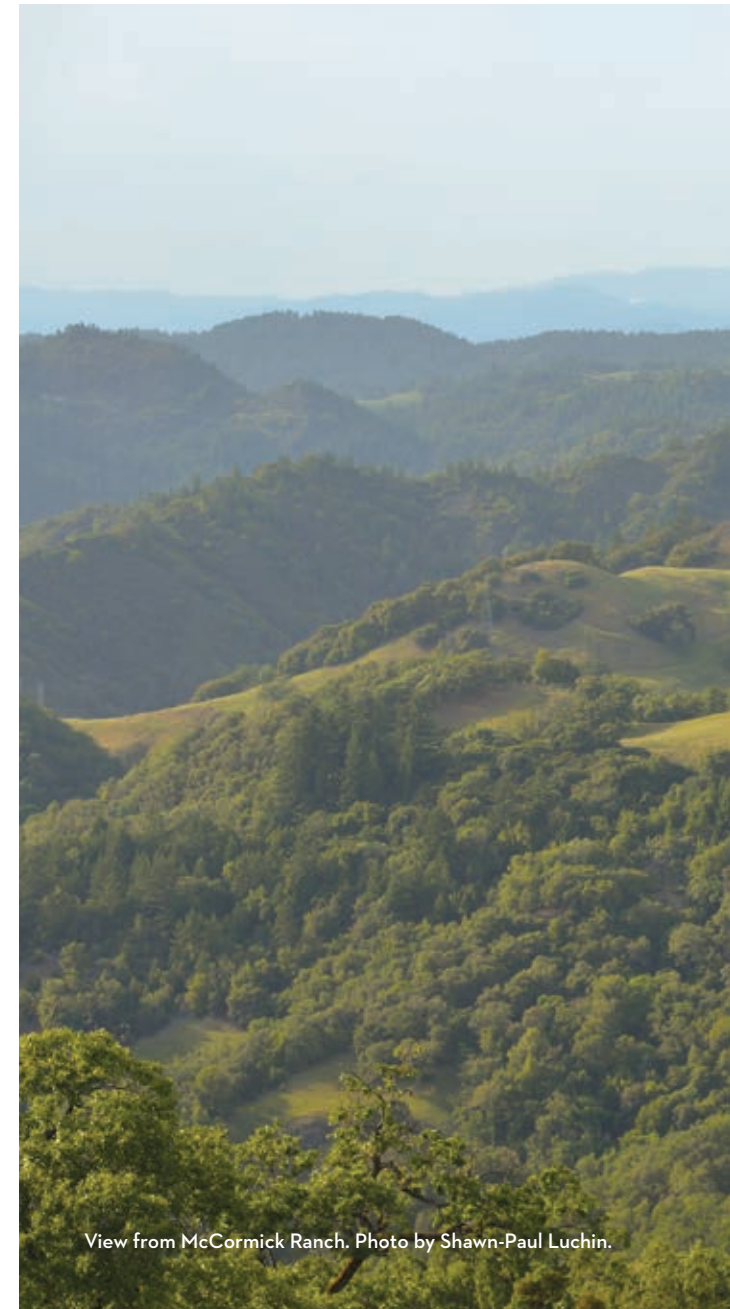
For the land,



Dave Koehler, Executive Director



Neal Fishman, Board Chair



View from McCormick Ranch. Photo by Shawn-Paul Luchin.

Front cover: Students at Bay Camp enjoying a paddle at the Sears Point Wetland Restoration. Photo by Lance Kuehne Photography.





## LAND IS THE HEART OF OUR COMMUNITY

---

Your land trust, founded in 1976, surpassed the milestone of 50,000 acres protected in 2016. It was 40 years in the making and involved a big vision, the ongoing support of our donors and the expert know-how of staff, board, partners and funders to see deals through. The gifts of property that we accepted in our early years laid the foundation for a sustainable land trust, able to act strategically to connect large swaths of habitat for protecting wildlife passageways and the natural systems on which we rely for clean water and air. We also protect and steward land for recreation and agriculture, both vital to the high quality of life we enjoy in Sonoma County.

Our projects have also become more complex, often involving multiple partners, future transfers to other organizations, ongoing monitoring and stewardship, and more. Acquiring a property or an easement generally denotes a beginning for our organization rather than an end.

That's where you come in as one of Sonoma Land Trust's loyal supporters. You understand the need and the reward of being a protector and steward of the land. More than ever before, it's the people with your sensibilities and commitment who will make the difference and enable your land trust to keep doing what only we can do.

But first, we thank you and invite you to celebrate all that we achieved over the past year ...





Kayaking at the Sears Point Wetland Restoration with Cougar Mountain and Highway 37 in the background. Photo by Corby Hines.

“

*Every once in a while,  
take the scenic route.*

— H. JACKSON BROWN, JR.





## ADDING “COMMUNITY” TO CONSERVATION

### SANTA ROSA GREENWAY

Sonoma Land Trust’s new role with the Santa Rosa Southeast Greenway Campaign fits the description of community conservation to a T: “An authentic, deliberate process that engages a diverse constituency in stating its shared values, needs and goals – to enhance a community’s capacity to be healthy and sustainable.” With Caltrans having agreed to sell the two-mile corridor between Farmers Lane and Spring Lake Regional Park, our acquisitions team has been busy raising the necessary funds to purchase the land. Thank you to funders thus far, which include the Sonoma County Agricultural Preservation and Open Space District (the District), Community Foundation Sonoma County and numerous individual contributors. We look forward to the time when the Greenway offers all of the attributes that the community has requested in public meetings: cycling and walking paths, pocket parks, community gardens, restored creeks and wildlife habitat, art displays and affordable housing. The Greenway is destined to be a public treasure, just like Central and Golden Gate Parks are for other cities.

### BAY CAMP

Our new bilingual Bay Camp splashed onto the scene this summer as children from the Springs area of the Sonoma Valley enjoyed week-long outdoor adventures at Sears Point Ranch. From bicycling to kayaking to birding and more, kids ages 6-13 had a blast learning about nature in

their figurative backyard. As 10-year-old Wendy Escobar exclaimed about Bay Camp, “It’s awesome! I like kayaking the most ... and seeing all the birds.” Thank you to our partners La Luz Center and the San Pablo Bay National Wildlife Refuge, funders that include the State Coastal Conservancy, Community Foundation Sonoma County and Vadasz Family Foundation, and donors Gordon Dow and Julia Pollock, who made this low-cost, high-impact day camp experience possible. Next year, we look forward to introducing even more children from this neighborhood to the wonders of the bay.

### SONOMA DEVELOPMENTAL CENTER

Our ongoing work to save the 700 acres of natural land on the Sonoma Developmental Center (SDC) property took a positive turn over the past year. The State still plans to close SDC as a residential hospital for people with developmental disabilities by the end of 2018. Under the banner of the SDC Coalition, we have been working closely with Supervisor Susan Gorin, County agencies and a wide array of Sonoma Valley organizations and residents to envision the future of this remarkable property. Due to the Coalition’s advocacy and grassroots organizing, the State has signaled that they are not planning to sell or develop the open space portions of the property and are, in fact, looking at options to expand Jack London State Historic Park to include the adjacent SDC lands. The June 2017 award by Impact 100 Sonoma of their \$100,000 “Impact” grant is a testament to the community’s strong desire to protect this significant resource. Sonoma Land Trust has also received funding from Resources Legacy Fund, the Gordon and Betty Moore Foundation, and numerous private donors to develop a park and open space protection plan for SDC that will benefit the Sonoma Valley for generations to come.



Making a friend at Bay Camp.



A Girl Scout visit to Sears Point. Photo by Corby Hines.





This summer's Bay Camp activities included bird watching out at Sears Point Ranch. Photos by Lance Kuehne Photography.



## BUILDING ON OUR SUCCESSES

---

### JENNER HEADLANDS

In 2009, Sonoma Land Trust purchased the 5,630-acre Jenner Headlands. Almost from Day One, we and our partners, The Wildlands Conservancy and the District, have offered numerous guided hikes for the public; it's always been our intention, however, for there to be unguided recreational access to both the Jenner Headlands and our adjacent Pole Mountain Preserve. This June, construction began on a parking lot, restroom and trailhead along Highway 1, making it possible for people soon to be able to explore these two spectacular coastal properties by themselves!

### TOLAY CREEK RANCH

A similar process is unfolding at Tolay Creek Ranch. Earlier this year, Sonoma Land Trust donated our stunning 1,665-acre ranch to Sonoma County Regional Parks to become part of Tolay Lake Regional Park. After Parks completes its master-planning process, it will be opening up the entire park up for unguided access.

### BAY TRAIL

After the Bay Trail opening at Sears Point last year, a cadre of Land Trust volunteers raised their hands to be trained as docents. Every Saturday morning, you can find these friendly nature enthusiasts at the convergence of the Eliot and Dickson Trails, informing hikers, bicyclists, birders and kayakers about the evolving marsh. They even set out spotting scopes so you can see the



The top of Pole Mountain and beyond.  
Photo by Corby Hines.

wetland wildlife up close. Excitingly, in the two short years since the levee breach, endangered Ridgway's rails, seals and fish have been observed in and around the tidal basin. Nature is quick to repopulate a functioning habitat.

### WILDLIFE CORRIDOR

Thanks to a generous new grant from the Gordon and Betty Moore Foundation, our efforts to protect the Sonoma Valley Wildlife Corridor continue and have expanded outward to the borders of Napa and Marin Counties. As part of that work, we have partnered with Audubon Canyon Ranch on their Mountain Lion Project, which has successfully collared and is tracking four adult lions in the Valley and surrounding hills. We've learned that our own Glen Oaks Ranch plays a key role in the mountain lions' lives and activities.

### STUART CREEK RUN

Two and a half years after completing the Stuart Creek Run project, which restored creek habitat for steelhead, the plants on the banks have grown and the creek looks almost completely natural. With funding from Wine Country Weekend and other donors, our stewardship team has recently added four parking spaces (including an ADA spot), interpretive signage and picnic tables crafted by volunteers to the property. With these amenities, we invite neighbors, members and people passing through the area to take a break and enjoy a peaceful interlude along this beautiful stretch of creek.



## PROTECTING THE FOREST AND RIVER

Sometimes we're the lead partner on a project and, sometimes, we play a specific role or roles in order to effect a deal. With the preservation of the North Coast forest a key goal of your land trust, we were happy to work with the District to protect Howlett Ranch. This 1,380-acre property harbors some of the last intact, old-growth forest in Sonoma County. To ensure the success of this transaction, we provided a bridge loan to the landowners in 2014 so they could hold out for a conservation outcome, and we also secured major funding toward the District's purchase of a conservation easement. Earlier this year, Howlett Ranch was protected forever.

Educating landowners and forestry professionals is another way of protecting the forest and, this past June, Sonoma Land Trust fulfilled a leading role in presenting the 2017 North Coast Forest Conservation Conference. Attendees learned effective forest management strategies, how neighbors can collaborate for forest health, and the biggest challenges facing our forests, and also had the opportunity to visit the Jenner Headlands and other forested properties to gain hands-on perspectives.

Our 2016–2020 Strategic Plan objective calling for the implementation of a land protection and stewardship program within the Russian River Watershed got a big boost this year with the hiring of a Russian River program manager in our Acquisitions department. You'll soon be learning more about the conservation priorities for this significant area within our county.



Howlett Ranch.

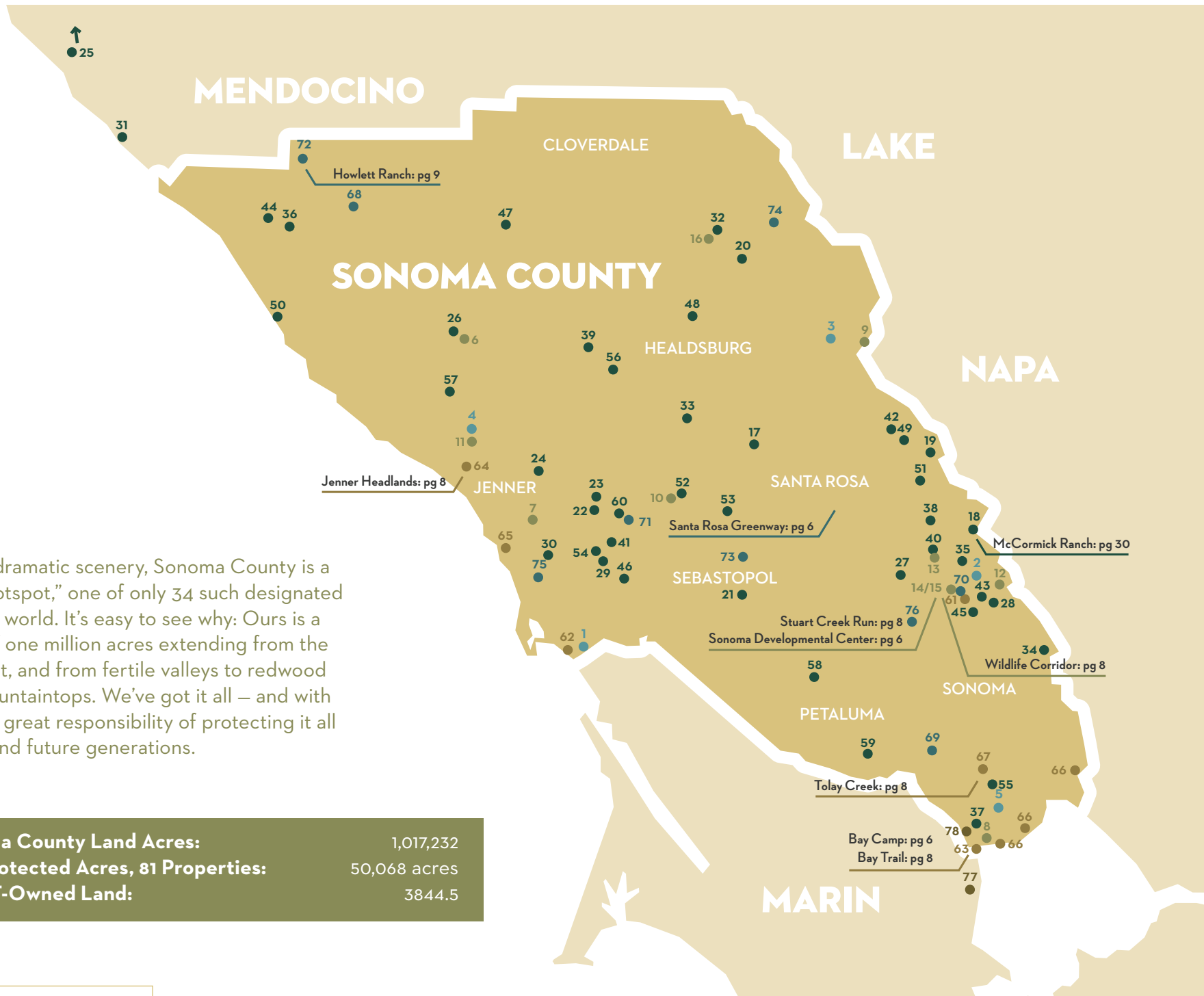
“

*Those who dwell among the beauties and mysteries of the earth are never alone or weary of life.*

— RACHEL CARSON



Stuart Creek Run.  
Photo by Lance Kuehne Photography.



Along with its dramatic scenery, Sonoma County is a biodiversity “hotspot,” one of only 34 such designated hotspots in the world. It’s easy to see why: Ours is a large county of one million acres extending from the bay to the coast, and from fertile valleys to redwood forests and mountaintops. We’ve got it all – and with that comes the great responsibility of protecting it all ... for present and future generations.

<b>Total Sonoma County Land Acres:</b>	1,017,232
<b>SLT Total Protected Acres, 81 Properties:</b>	50,068 acres
<b>Acres of SLT-Owned Land:</b>	3844.5



**ANCHOR PRESERVE ACREAGE**

1	Estero Americano	127
2	Glen Oaks Ranch	236
3	Laufenburg Ranch	179
4	Little Black Mountain	500
5	Sears Point Ranch	1,142

**ECOLOGICAL PRESERVE**

6	Cedars Gateway	40
7	Freezeout Redwoods	89
8	Leonard Ranch	244
9	Live Oaks Ranch	572
10	Lower Pitkin Marsh	27
11	Pole Mountain	238
12	Secret Pasture	339
13	Sonoma Creek	2
14	Stuart Creek Hill	14
15	Stuart Creek Run	3.5
16	White Rock Preserve	92

**CONSERVATION EASEMENT**

17	Airport Boulevard	50
18	Bald Mountain Ranch	420
19	Be Here	100
20	Bear Canyon	96
21	Blucher Creek	7
22	Bohemia Ecological Preserve	554
23	Bohemia Ranch	410
24	Canelis Old-Growth Redwoods	1
25	Cuffey's Cove	1,068
26	Dimbat Tree Farm	160
27	Drake Family	34
28	Elarra	60
29	Enchanted Wood	8
30	Finley Creek	240
31	Fish Rock Ranch	7
32	Gird Creek	99
33	Griffin Wildlife Sanctuary	44
34	John Holden	21
35	Knaus Forest at Nuns Canyon	36
36	Little Creek	40
37	Lower Ranch	528
38	Mason	18
39	Mill Creek Old Growth	54
40	Morgan Hill	22
41	Mother Gardens at OAEC	1.5
42	Nefertiera	78
43	Oak Hill Farm	677
44	OGA Annapolis	73
45	Old Hill Ranch	37
46	Quail Hill	80.5
47	Rancheria Creek Recesses	602
48	River Bend	32
49	Rock Fall Woods	31
50	Rocky Point	255
51	Santa Rosa Creek Headwaters	162
52	Sassin	6
53	Summerfield Waldorf School	32
54	Sunrise Redwoods	20
55	Tolay Creek Riparian	36
56	Van Winkle Redwoods	46
57	Ward Creek	240
58	Watson Ranch	530
59	Westridge Knolls	74
60	Wild Turkey Hill	8

**TRANSFER ACREAGE**

61	Curreri	29
62	Estero Ranch	547
63	Halperin Baylands	11
64	Jenner Headlands Preserve	5,630
65	Red Hill	910
66	San Pablo Bay National Wildlife Refuge	3,365.5
67	Tolay Creek Ranch	1,665

**TECHNICAL ASSISTANCE ACQUISITION**

68	Buckeye Forest	19,645
69	Cloudy Bend	388
70	Happ-Moses	0.4
71	Harrison Grade Serpentine	32
72	Howlett Ranch	1,380
73	Laguna de Santa Rosa	535
74	McCord Ranch	2,786
75	Rigler Preserve	370
76	Sonoma Mountain Ranch	283

**TECHNICAL ASSISTANCE STEWARDSHIP**

77	Bel Marin Keys	1,500
78	Petaluma River Marsh	49

NUMBER OF VOLUNTEERS  
**2016: 205**  
**2015: 149**

**50**  
 ADVENTURES FOR  
**1,140**  
 PEOPLE IN  
 SONOMA COUNTY

**3,333**  
 VOLUNTEER  
 HOURS IN 2016  
 UP FROM 1,718 HOURS  
 IN 2015

**GETTING ON THE LAND**

Our On the Land program continues to take people outside to enjoy and explore our protected preserves through hikes, kayaking, children's days and more.

Our volunteer program is growing by leaps and bounds, too.



# THANK YOU





Tolay Creek Ranch in bloom.  
Photo by Corby Hines.

# THE SUMMIT LEADERSHIP CIRCLE

United by their commitment to preserve the irreplaceable landscapes of Sonoma County, the Summit Leadership Circle recognizes those who contribute \$10,000 or more to Sonoma Land Trust on an annual basis. Their leadership and generosity empower your land trust to act quickly to protect lands that are essential to our community’s character, health and well-being, and are deeply appreciated.

We gratefully acknowledge the following for their gifts or pledges made from January 1, 2016 through March 31, 2017.

## \$50,000+

- Anonymous (2)
- Fran Conley
- Hal Hinkle and Katherine Bailon
- Pete Mattson
- Bill and Jeanne Osterland
- Eva and Bill Price
- Richard and Sharon Shlegeris
- P. Lynn Woodward

## \$20,000–\$49,999

- Drew and Ellen Bradley
- Dianne Brinson and Mark Radcliffe
- Virginia Fifield
- Robert and Michelle Friend
- Carolyn Johnson and Rick Theis
- Phoebe Lang and Sanjay Bagai
- Jake Warner and Toni Ihara

## \$10,000–\$19,999

- Anonymous (4)
- Harold Appleton
- Thomas Bachman
- Jennifer Bice
- Clay and Kim Clement
- Anthony Crabb and Barbara Grasseschi
- Ethel and Eugene Daly
- Lynne Deegan-McGraw
- Joanne Dow
- Erickson Family Charitable Foundation
- Gaia Fund
- Richard and Luisiana Gale
- Judith and Paul R. Gray
- Hanford ARC
- Troy and Steven Hightower

- Bruce Johnson and Jeff Mounce
- Perry and Melanie Karsen
- Jack Levin, MD
- Meshewa Farm Foundation
- Susan and John Millar
- Kenneth Ogren
- Pinpoint Foundation
- Julia E. Pollock
- Tim Portwood and Jim Lauber
- Harry and Dee Richardson
- George Sardina, MD
- Judy Scotchmoor and Roland Gangloff
- Daphne Smith
- The Taheri Foundation
- Peter and Marian Van Alyea
- Kenneth and Anna Zankel



“ At some point in life,  
the world’s beauty  
becomes enough.  
— TONI MORRISON

McCormick Ranch looking toward Mount St. Helena.  
Photo by Shawn-Paul Luchin.



# THE EVERGREEN CIRCLE

The following generous supporters are recognized for their dedication and loyal support, which helps Sonoma Land Trust achieve its mission.

We gratefully acknowledge the following for their gifts or pledges made from January 1, 2016 through March 31, 2017.

## \$5,000—\$9,999

Anonymous (1)  
Artifex Software, Inc.  
Meg Beeler and Tom von Tersch  
Marc Benson and Charles Sullivan  
The Mervyn L. Brenner Foundation  
Caryl Carr and David Presotto  
Frank and Pat Carrubba  
Marie Chandoha and David Anderson  
Ambassador Charles E. Cobb  
Commoncents  
Cressman Family Foundation  
Caroline Daniels  
Suzanne L. Dibble and Jeanne F. DeJoseph  
Patricia Dinner  
Gordon Dow  
Neal Fishman and Maxene Spellman  
Julia L. Grant  
Dick and Mary Hafner  
Michael and Mary Ann Hasenstab  
Diane and Bryant Hichwa  
Kimberly Hughes  
Quincey Tompkins Imhoff and Dan Imhoff  
Deborah Jacobi  
Jack and Marilyn Jones  
Martha Ann Langston  
Sheila and Paul Leach  
Mary-Hoe Love  
Sandra Martensen and Alan Selby  
Hugo and Beth Martinez  
Penny and Brad Moore  
Gerald and Lilly Mugele  
George Myers and Kathleen Heitz  
Dr. David Noorthoek  
Paul and Sandy Otellini  
Matthew and Stacy Perry  
David Platt  
Janne Platt  
Bridget Quinn and Rick Orr  
Fred Reid  
Maggie Salenger and Peter Haywood  
Allison Sanford and Patrick W. Emery  
Thomas and Shirley Simone  
Steve and Wendy Smit  
John P. and Carry Thacher  
Ligaya Tichy and Russel Simmons  
The Tukman Family  
Sarah Tukman  
Denny and Kate Van Ness  
Michael and Janet Verlander  
Ben Wheeler  
Elizabeth A. Zitrin

## \$2,500—\$4,999

Jim and Lynda Allen  
Jeff and Francesca Amann  
Darius and Sarah Anderson  
Robert and Paula Brent  
Sara and Dixon Browder  
Laura Chenel  
John and Mary Crockenberg  
Kathy Drake  
Beth and Howard Dunaier  
Ted and Pat Eliot  
Joe Ficarelli  
Bob and Marcia Fosberg  
Tom and Cappie Garrett  
Joe and Susan Gorin  
Brad Hall and Jo Ann Campbell  
Maud Hallin  
Amanda Hamilton  
Bob and Carol Hasenick  
Sue and Mike Hoey  
Meleana Holroyde  
Tom and Caroline Hoyt  
Norma K. Hunt  
Dave and Sharon Koehler  
Ellen and Wayne Krebs  
Dana Kueffner and Peter Heinemann  
Maribelle and Stephen Leavitt  
Janaize Markland  
Allan Martini  
Kevin and Rosemary McNeely  
John L. Moulton  
Redwood Hill Farm & Creamery  
Elizabeth and William Reilly  
Victor Reus, MD and Kira Tiedgens  
Marcie Rothman  
Robert B. Sargent  
Kristina Schulze-Torres and Deric Torres  
Stephen and Betty Sherer  
Hans and Gay Stern  
Chris Stover and Lorraine Bazan  
Anne Teller  
Stephen Vallarino and Raini Sugg  
Nelson and Jane Weller  
Carol Williams  
Sam Woodworth

## \$1,000—\$2,499

Anonymous (3)  
Kenneth and Karen Adelson  
Nabeel Al-Shamma and Hala Al-Shahwany  
Tania Amochaev

Mary Evelyn Arnold  
Lindsay and Kirsten Austin  
Jeffrey Baker and Diana Lee Craig  
Sharon Bard  
Henry Beaumont  
JoAnn Berman  
Virginia Bertelsen  
Hugh Black  
Simon and Kimberly Blattner  
Kathleen and Dennis Bloch  
Noel Bouck  
Berenice and Lawrence Brackett  
Ellen Brantley and Ron Vitt  
Vina and Jon Breyfogle  
Peter C. Brown  
Brenda Buckerfield and Tommy Messing  
Arden Bucklin and Karl Sporer  
Kate Bucklin and Thomas Hegardt  
Will Bucklin and Lizanne Pastore  
Bruce and Susan Burdick  
Glenn and Peggy Calkins  
Joseph and Kelley Capone  
Mike Center and Marlene Russell  
Susan M. Clark  
Robert Clegg  
Jim Cole  
Sue Conley and Nan Haynes  
Kevin and Nancy Cooper  
Robert Cormack  
Dennis Courtier  
Ronald and Carol Cox  
Robert and Mary Craig  
Patricia Cullinan  
Ben Cushman and George Tuttle  
Kirsten and Ed Cutler  
Cindy Daniel and Doug Lipton  
Anita F. Das  
Ann Halsey Davis  
Peter J. Davis and Joan Irwin  
Allison and Michael Delman  
Mary O'Hara Devereaux  
David and Lee Devine  
Domaine Carneros, Ltd.  
Sandra Donnell and Justin Faggioli  
John and Sara Donnelly  
Prudence Dreyfus  
Barrie Eddy  
Ronald P. Evens  
Leslie and Todd Everett  
Dave Faris  
Nancy Fee  
Carolyn Zecca Ferris and Timothy Ferris

Angelo P. Figone  
Jason M. Fish and Courtney Benoist  
John and Judith Fisher  
Caroline and Spencer Fleischer  
Freeman Vineyard & Winery  
Anne French  
Ellen Fishburn  
Suzanne and Joseph Geary  
Susan Gilliland  
John and Karen Glickman  
Natasha Granoff  
Dale Gruen  
Janine Guillot and Shannon Wilson  
Raymond and Amanda Haas  
Scott Hafner and Bill Glenn  
Susan Hagemeister and Mark Martin  
Yvonne Hall  
Donna Halow  
Linda and Dave Hanes  
Jack and Deyea Harper  
The Robert and Shirley Harris Family Foundation  
Jill Henry  
Duncan and Dorene Higgons  
Christopher and Deirdre Hockett  
Nancy and John Hoogendyk  
Jeffrey and Lynn Horowitz  
Keith and Cheryl Hughes  
Helen Issel  
Ann Iverson  
Paul Jaffe  
Philip Jensen  
Steve Johnson and Leslie Friedman-Johnson  
Sharon Keating and Ron Bartholomew  
Janet Ketcham  
Aaron Klink  
Valerie and Michael Kobal  
Sheila and Michael Lagos  
Renate and George Lee  
Sandy and Geoffrey Leonard  
Toby and Jerry Levine  
Nancy and Tony Lilly  
Ted and Joyce Love  
Marcia Luisi and Richard Strunin  
Robert Lutolf  
Susan G. MacMillan  
Richard Makdisi and Lindsay Wheeler  
Laura and Larry Martin  
Henry and Bridget Massie  
Craig and Caryol Mathiesen  
Jack May and Hilary Austen  
Jeffrey Mayo  
Stephanie McAllister and Roger Jungerman  
Morton and Grace McMichael  
Glenn and Tricia Melosh  
Ben and Linda Miller  
Mary Edith and Gerald Moore  
August J. Moretti  
Sheri Morgensen  
Cristina and Robert Morris  
Mr. and Mrs. D.E. Mundell  
Barbara Nelson and Craig Tracy  
Donald and Sylvia Nevins  
Scott Newman and Mary Debenedetti  
Gregg and Anne Nordquist  
W. Middleton O'Brien  
Richard and Susan Olness  
William Oran  
Pamela and Alan Page

Diane Parish and Paul Gelburd  
Anne and Robert Pedrero  
Mia and Ted Pelletier  
Eileen and Phillips Perkins  
Fred and Barbara Perry  
Roland Pesch and Kathy Roskopf  
Barry Petersen and Mary Nell Wolff  
Sharon Ponsford and Chris Jones  
Anna and Frank Pope  
John and Polly Post  
David Pottruck  
David Powers and Beverly Schor  
Louis and Susan Preston  
Purdum Family Fund of Community Foundation  
Sonoma County  
Greg and Gail Ralston  
Donald C. Rathbone and Lawrence S. Hilty  
John and Carlene Reininga  
Bill and Mary-Louise Reinking  
Willard and Nancy Richards  
Ellie Rilla and Patrick Laherty  
Michael Ring and Jacqueline Bonner  
Colleen R. Riordan and Thomas D. Bates  
Sally and Toby Rosenblatt  
Thomas Rouse  
Robin Doerr Russell  
Paul Rutkowski  
Teresita Salter-Haag  
Diana Sanson  
Susannah M. Schroll  
Paul Schwartz  
Don Seaver  
Dr. and Mrs. Michael Shane  
John and Liz Sheela  
Andrea and Bryon Sheets  
Harvey and Deborah Shein  
Roberta Shippey  
Susan Smile  
Mikell Smith  
Susan Manuel Smith  
Sara and Bill Snyder  
Margaret and Thomas Sokoloski  
Alan Soule  
Laura and Gregory Spivy  
David and Vicki Stollmeyer  
Michele and Rich Stratton  
Jack and Diane Stuppin  
Sarah Sweedler and Nat Wyatt  
Jamie Thistlethwaite and Steven Weiss  
Charlene Thomason  
Cynthia Thomssen and Joe Hyde  
Laney and Pasha Thornton  
Three Twins Ice Cream  
Janet Tonkin  
TrimTab Media LLC  
David Turpin  
Robert and Deborah Van Nest  
Dean Watson and Jan Ogren  
John Weinstein and Heidi Stewart  
Mason Willrich  
Diane Wisley  
Sheila Wishek  
Linda Woodworth  
Bruce and Nancy Worthington  
Michael and Katie Wright  
Anne Wurr  
Gudrun Zomerland

# LEAVING A LEGACY

For their foresight and generosity, we recognize the following individuals and families for making Sonoma Land Trust part of their estate plans.

## IN MEMORIAM

Ann Baumann  
Ruth Bellman Belmont  
Barbara Biebush  
Donald Bradley  
Betty Burridge  
Abbie Gail Freedman  
Gordon Dennis Gary  
Pauline Gilbert  
Alden Gilchrist  
Robert DeGreeff Jacobi  
Marjorie and Bob Meadows  
Marianne S. Perron  
Adam Richter  
Roger Sheridan  
Janet Siela  
Robert Skinner  
Ernestine (Ernie) Smith  
Thomas Tyrrell  
John Woodbridge and Carolyn Kizer Woodbridge

Christine H. Dohrmann  
John and Sara Donnelly  
Karen d'Or and Bob Pittman  
Nancy Doyle, MD  
Margo Eachus  
Ted Eliot and the late Pat Eliot  
Christine Engel  
Gail Enos  
Joe Ficurelli  
John and Judith Fisher  
Neal Fishman and Maxene Spellman  
Dyana Foldvary  
Paul Foster and Rick Gutierrez  
Akiko and Ken Freeman  
Nan Kathryn Fuchs, PhD  
Cheryl and Derlin German  
Susan Gilliland  
Mark Ginsburg  
Natasha Granoff  
Amanda Mills Hamilton  
Dick Hafner and the late Mary Hafner  
Lillian Hanahan and the late Don Hanahan  
Don Hanesworth  
Jack and Deyea Harper  
Bob and Carol Hasenick  
John Helm  
Diane and Bryant Hichwa  
Troy and Steven Hightower  
Darla Hillard and Rodney Jackson  
Sue and Mike Hoey  
Michael Houlihan and Bonnie Harvey  
Tom and Caroline Hoyt  
Stewart and Jane Hume  
Michele Issel  
Deborah Jacobi and the late Robert Jacobi  
Mark Jacobsen and Pamela Laird  
Paul Jaffe  
Carolyn Johnson  
Joanna Kemper  
Charles B. and Judith A. Kimball  
Charles Kittel  
Dave and Sharon Koehler  
Gary and Christine Koziel  
Ellen and Wayne Krebs  
Paul and Maureen Larson  
Jack and Mary Lawrence  
Kathleen Lawton  
Linda Lea, PhD  
Leo Malloy and the late Robert Buchanan  
Sarah Cameron Lerer and Jim Lerer  
Marcia and Jim Levy  
Linda Liscom and the late Ed Power  
Reta Lockert

## LEGACY LEAGUE MEMBERS

Anonymous (11)  
Susan E. Albrecht  
Stephen Album  
Mary Allison  
Allison Ash and Marc Schwager  
Russ Bair and the late Peggy Bair  
Richard Bartlett  
Olive Bavins and the late Leonard Bavins  
Tom von Tersch and Meg Beeler  
Reid D. Bennett  
Ralph Benson  
Janet Bosshard  
Ellen Brantley and Ron Vitt  
Robert and Paula Brent  
Dianne Brinson and Mark Radcliffe  
Sara and Dixon Browder  
William J. Bryan  
Mark Burchill and MeL Konrad  
Paul and Jan Chaffee  
Laura Chenel  
Stephanie Chiacos  
John and Lena Chyle  
Christine Cohen  
Fran Conley  
Reed and Judith Content  
Ben Cushman and George Tuttle  
Ethel and Eugene Daly  
Peter J. Davis  
David and Lee Devine

Eileen Maloy  
Sandra Martensen and Alan Selby  
Laura and Larry Martin  
Peter Mattson and the late Patty Mattson  
John McKinney and Sue Campbell  
Henry McNeely, MD  
Glenn and Tricia Melosh  
Lois Miller  
Margaret Mori  
Mary Mueller  
Kathleen Mugele  
Richard and Brenda Nichols  
Dr. David Noorthoek  
Bill and Jeanne Osterland  
Mary K. Oswald  
Kim Parker  
Fred Perry and Barbara White Perry  
Ervand and Judie Peterson  
Julia E. Pollock  
Sharon Ponsford and Chris Jones  
Tim Portwood and Jim Lauber  
John and Polly Post  
Nancy A. Sheppard and S. Peter Poullada  
Art and Elaine Reichert  
Victor I. Reus, MD and Kira D. Tiedgens  
John and Patricia Rich  
Harry and Dee Richardson  
Ellie Rilla and Patrick Laherty  
Robin Rogers  
Ben and Barbara Rooks  
Stephen and Martha Rosenblatt  
Margaret Salenger Haywood  
Allison Sanford and Pat Emery  
Robert and Carol Sanoff  
Mary Savage and the late Michael Savage  
Judy Scotchmoor and Roland Gangloff  
Andrea and Bryon Sheets  
Dunham and Joyce Sherer  
Richard and Sharon Shlegeris  
Marilyn Smiley  
Steve and Wendy Smit  
Daphne Smith  
Susan Manuel Smith  
Carole Spalding, in memory of Peter Ruffino, Sr. and Melba Ruffino Boehme  
Ingrid Valerie Spetz  
Chris Stover and Lorraine Bazan  
David L. Tauck  
Philip Tymon  
Mrs. Lee J. van der Ploeg  
Denny and Kate Van Ness  
Carolyn Verheyen  
Valerie Pistole Walter and Jeffrey Walter  
Warren Watkins  
Dean Watson and Jan Ogren  
Shirley Weisman  
Suzanna Wellington  
Gretchen Whisenand  
Carol Williams  
Joan Woodhull  
P. Lynn Woodward  
Anne Wurr  
Wendy Zukas



## ELLIE RILLA MEMBER SINCE 1990, LEGACY LEAGUE MEMBER

*“As a long-time resident, I want to protect these special landscapes and that’s why I have supported SLT all these years. The Land Trust is and has always been uniquely positioned to leap into action when a property comes up for sale. This picture we all love isn’t static. It changes as development pressures and landowners change hands. SLT is a good steward and being a part of it is an honor and a privilege.”*



## MEMBERS

### \$500—\$999

Marc and Meg Alexander  
 Bill and De Andersen  
 Ted Andersen and Kat Gledhill  
 Allison Ash and Marc Schwager  
 Jeff Baptista  
 Carolyn B. Barber  
 Edward and Susan Barich  
 Marcia and John Barinaga  
 William Barnier  
 Hallie Beacham and Paul Downey  
 Steve and Terry Beck  
 Patricia Belardi  
 Helen and Robert Berg  
 Richard and Teresa Bland  
 Jim and Tillie Botz  
 Douglas G. Boven  
 Laura and Kirk Bowman  
 Tom and Laura Box  
 Alma Boylan  
 Tim and Peggy Brown  
 Bob and Heidi Burke  
 S. Davis Carniglia and Mary-Claire Baker  
 Peter and Laura Carroll  
 Dennis Casad  
 Barbara Chapman  
 Theodore and Lynda Chenoweth  
 Amy Chesnut  
 Richard Clarke  
 Steven Cochran  
 Mary C. Connick  
 Mickey S. Cooke  
 Brett Cooper and James Fontanilla  
 Susan Coryell and Bruce Penrod  
 John and Elizabeth Cotton  
 John Cruz and Kay Hanlon Cruz  
 Rob Das and Beth Berkson  
 Michael and Lynn Davis  
 William N. Davis  
 Edward and Della Dobranski  
 Chris and Lisa Dobson  
 Irene Ehret  
 Wendy Eliot and Michael Fitzgibbon  
 Robert Ellis and Jane Bernstein  
 Hazel L. Eshleman  
 Fred and Jocelyn Euphrat  
 David and Denna Faloni  
 Caroline and John Ferrando  
 Robert and Penny Fink  
 Ned Forrest and Leslie Whitelaw  
 Ann and Michelle Fouts-Reppun  
 David and Ginny Freeman  
 Robert Fried and B. Pamela Burleson  
 Renata Gasperi  
 Nina Geneson  
 Tim and Pamela Gilmore  
 Dan and Ann Gladding  
 Pete and Jill Golis  
 Anne Golseth  
 Kirk Gould  
 Dorothy D. Gregor  
 Ann Grove and Wayne Kocher  
 Katherine and Lance Gyorfi  
 Kate Hafner and Martin Bernal

Beth Harper  
 Bruce Hartsough and Lesli Lee Hartsough  
 Michael and Patricia Hayes  
 Phillip and Naomi Holm  
 Gregg and Cathy Hopkins  
 Priscilla Ireland and Dale Carroll  
 Steve Isaacson  
 Joanna and Dan Kemper  
 Patricia Kim-Gable and Scott Gable  
 Joshua and Luz Kirsch  
 Nancy and Kyle Kirwan  
 William Klippert  
 Chris Koch  
 Richard Kunde  
 Michael and Gail Lamotte  
 Nelson Lee and Lia Rudnick Lee  
 Andrew Leuzinger and Mary Leveque  
 Peter Robert Lewis  
 Marjorie Lilienthal  
 Kim and John Lloyd  
 Margaret Lourenco and Rich Blaska  
 Greg and Liz Lutz  
 Jake and Barbara Mackenzie  
 Martin H. Mackey  
 John Mackie and Kathleen Ecker  
 Janice MacNaughton  
 Pat Mazzini  
 Mary Lee and Michael McCune  
 Eliska and Randy Meyers  
 Ronald A. Mickelsen  
 George Miers and Jennifer Kuenster  
 Penny Millar and Paul O'Rear  
 Nancie Theresa Mills Piggras  
 Gerald Missey  
 Clark Mitchel and Carol Cole Mitchel  
 Kate and Wes Mitchell  
 Rosa Maria Mitchell  
 Kathleen Mugele  
 Christine and Michael Murray  
 Nielsen:Schuh Architects  
 Eric Norrbom  
 The Oliveira Family Trust  
 Steven and Nancy Oliver  
 June and Darrell Osbourn  
 David and Evelyn Osteraas  
 Domenic J. and Birgitta Paino  
 Johanna Patri  
 Henry and Renee Peters  
 Phillip Polakoff and Nancy Pfund  
 Carolyn and Steven Pride  
 Marianne Ramer  
 Sydney and John Randazzo  
 Kathy and Earl Rathbun  
 Jeanne Rayner  
 Sarah and Ken Reid  
 Ted Roberts  
 Larry Robinson and Cynthia Kishi  
 Julianne Rumsey  
 Bob Rutemoeller and Mary Sue Ittner  
 Carol and Harry Saal  
 Guido and Catherine Saveri  
 Delia Schmedding  
 Jim Schratz and Carole Kelleher  
 Caroline and Angus Scott  
 David Andrew Seter  
 Wylie and Judy Sheldon  
 Sandra Shepard and Herbert Wolfram  
 Dunham and Joyce Sherer

Deborah Simons  
 Louis and Jean Sloss  
 Louise Smith  
 Carl Speizer and Judi Cohen  
 Kat Stephens  
 Stephanie Storms  
 John P. Strebel  
 Gilda and Daniel Sullivan  
 Patricia and Thomas Swaney  
 Margaret and Richard Tempero  
 John Temple  
 Joe and Eileen Tenn  
 Elizabeth and Theodore Theiss  
 Andrea and Jeff Tobias  
 Sylvia Toth and Zsolt Takacs  
 George Turner  
 Jane Turrel  
 Arlene Ulmer  
 Janice Vannatta  
 Joseph and Deborah Votek  
 Henry W. Wagner, III  
 Arlene Wasserman  
 Susan and Dewey Watson  
 Ronald Welch and Ellen Watson  
 Grace Wheeler  
 Lucy Whitworth  
 Chloe Wurr  
 Juliet Wurr

### \$100—\$499

Anonymous (9)  
 Mary Abbott  
 Keith Abeles  
 Keren and Robert Abra  
 Suzanne and Steve Abrams  
 Edward E. Abramson, PhD  
 Shirley and Henry J. Aceto, Jr.  
 Alla Acheff  
 Richard Adam  
 Janice Adams  
 Antonia Adezio and Rick Goodsell  
 Robert Ahders  
 Suzanne Albin  
 Susie Albrecht and Jim O'Neil  
 Stephen Album  
 Raymond Alden  
 Katie Alvord  
 Bill and Janet Anderson  
 Bob and Sue Anderson  
 Craig Anderson and Lee Hackeling  
 David James Anderson  
 Jerry Anderson and Tricia Coxhead  
 Shelly Anderson  
 Lynda T. Angell  
 John Anton  
 Susan and Bill Arbios  
 Steve and Valerie Arelt  
 Renee A. Armstrong  
 Rosanne Arthur  
 Pamela J. Asselmeier and Lisa Kriehok  
 Roger Atkinson and Janet Arey  
 Richard Auger and Mary Radu  
 Suzanne Axtell  
 Peter E. Babcock  
 Joan Bacci  
 Linda Bacci  
 Chris and Phyllis Baldenhofer  
 Jane and Jerry Baldwin  
 Robert and Anne Baldwin  
 Mary and Peter Banks  
 Steve and Debby Barbose  
 Erica Barlas  
 Kay Barnes  
 Zelda Barnett  
 Linda and Stephen Barnhart  
 Robert Barron  
 Linda Bartera  
 Richard Bartlett  
 Dave and Becky Bass  
 Helen and Michael Bates  
 Christina Batt and Robert Doyle  
 Alvin H. Baum, Jr.  
 Allen Bealer  
 Richard K. Beebe  
 Martin and Ginny Behr  
 Earl and Linda Behrens  
 Jean Behse  
 Julia and Allen Benello  
 Kirk Bennett  
 Reid D. Bennett  
 Janet and Jon Bensick  
 Ralph Benson  
 Gregory Beran  
 Bonnie Berkeley and William Smith  
 Rhonda Berney  
 Paul and Yael Bernier  
 JoAnn and Jack Bertges  
 Emily Betts  
 Gary M. Beuschel and John S. Kruse  
 Bridget Beytagh  
 Helen and Larry Biddle  
 Sheila Bigelow  
 J. Michael and Kathryn Bishop  
 Wes and Christine Blackwelder  
 Ron Blanc  
 Janelle Blanco  
 Joel and Pamela Blumberg  
 Heidi Blumenthal  
 Mike and Susan Bobbitt  
 Walt and Sandra Bodley  
 Monica Boettcher  
 Nancy and Richard Bohannon  
 Pamela Bolton and Steve Williams  
 Robert Booth and Pamela Powell  
 Aldo Borin  
 Lorraine Bosche  
 Joan C. Bossart  
 Mary Boster  
 Gordon and Tamara Boultsbee  
 Kerry Bourdon  
 Homer and Virginia Boushey  
 Ted Boutacoff  
 Becky and Winston Bowen  
 Frances Bowes  
 Mary Jo Bowling and Michael Sacksteder  
 Tom and Margaret Bowman  
 Anna Boyer  
 Carolyn Boyles and George Muehleck  
 Barbara and Denny Bozman-Moss  
 Nancy and Timothy Branstetter  
 Larry Braverman  
 Sylvia Bray and Bernardo Larque  
 Jack and Jeannette Breglio  
 Sean and Emily Bressie  
 Norman Brewer

Sarah Brooks  
 John Broughton  
 Kristina and Thompson Brown  
 Holly Brown-Williams  
 Bill Broz and Kathy Simmons  
 Henry Bruce  
 Michael Shawn Brumbaugh and Jennifer Richardson  
 Kim and Alan Brune  
 Janet Bruno and David Morell  
 Lorraine Bruno  
 Elizabeth Bryant and Kimberly Lawton  
 Margo Budman  
 Glen Buelteman  
 Priscilla and Michael Bull  
 Stephen C. Burger  
 Marcia Burkart  
 Siobhan Burke  
 Alf and Mary Burtleson  
 Linda Burton-White  
 Wanda Burzycki and Marc Mager  
 Karen and Lee Bushnell  
 Clifford and Valerie Butcher  
 Ann Butler  
 Katharine Butler  
 Tracy Butler and David Marcus  
 Marilyn and Michael Cabak  
 Mary L. Cabbage  
 William Cadman and Tulocay Winery  
 California's Artisan Cheese Festival  
 Gerald Camarata  
 Kim and Rocky Camp  
 Patricia Kathleen Cannon  
 John F. Capitani  
 Tesa and Robert Carlsen  
 Gustave Carlson  
 Christofer Carpenter  
 Cynthia and Greg Carr  
 Darrell and Mary Kate Carter  
 Robert and Blythe Carver  
 Rob Catterton and Gwynn O'Gara  
 Linda Cederberg  
 Robert and Shirley Cerniglia  
 Anne Chadwick  
 Paul and Jan Chaffee  
 LeRoy and Norma Chandler  
 Ronald and Audrey Chapman  
 Roberta and Doug Chase  
 Barbara Chasteen  
 Roger and Eliza Cheitlin  
 James and Tracy Chin  
 Francesca A. Chinn  
 Tim Choate  
 Rene and Susan Choateau  
 Karen and Michael Christensen  
 ChromaGraphics  
 Randal S. Churchill  
 John and Lena Chyle  
 James Cleaves  
 Robert and Phyllis Clement  
 Bill and Mady Cloud  
 Marne Coggan and Debra Friedenberg  
 Kathleen and Martin Cohn  
 Debi Coish  
 John and Eddie Cole  
 Community Endowment Fund of Community Foundation Sonoma County  
 Vic and Kit Conforti

Mary and Michael Connolly  
 Reed and Judith Content  
 Bob and Nancy Cooley  
 Barbara Cooper  
 Gerald and Buff Corsi  
 Steve Costa and Kate Levinson  
 Don and Susan Couch  
 Anne Coughlin  
 Jack Covington  
 Shirley Cowan  
 W. James Coyne  
 Dale Crandall  
 Patti and Jim Crandall  
 Hohum Conco  
 Eleanor Crary  
 Jesse Crider  
 Patricia and Michael Crilly  
 Allan and Maureen Crivello  
 Don Crosby  
 Christopher Crossland  
 David and Elizabeth Crouthamel  
 Gina Cuculis-Tennant and Roy Tennant  
 Earle and Susan Cummings  
 Kelsey Cummings  
 Katherine Cuneo  
 Mary and Michael Cuoio  
 Marion Cushman  
 Richard Dale  
 Dr. and Mrs. Fred David  
 Judith Davis  
 Judy and Rick Davis  
 Victor De Beck  
 Duane and Sheila de Long  
 Maria P. DeBernardi  
 Esther and Daniel DeBra  
 Eleanor Decker  
 Jayne DeLawter and Ken Koppelman  
 Roberta Delgado  
 Paul and Diana DeMarco  
 Claire DeMartini  
 Jim and Nancy Dempsey  
 John Dennison  
 DJ DeProspero and Gerry Glaser  
 William DeRoo and Jennifer Gustafson  
 John and Patricia Dervin  
 Sharon Dezurick  
 Jon Dickson  
 Michael Diskin  
 Ron and Sandy Dodge  
 Jim and Betty Doerksen  
 Sofie and Chris Dolan  
 Robert Dollar  
 Allen and Susan Dollberg  
 Catherine Elizabeth Dolph  
 Dennis and Patricia Dong  
 Frank and Jackie Dono  
 Peter and Celia Dornbach  
 Joseph and Anna dos Ramos  
 George and Cynthia Doubleday  
 Jenny Downing  
 Lois Downy and George Freund  
 Nancy Doyle, MD  
 Bill Doyle  
 Richard and Sandra Drew  
 Julie and Scott Drummond  
 Melissa DuBose and Regina Marler  
 Peter and Anne Duffield  
 Brad and Dina Duncan

Douglas and Martha Duncan  
 Paul Duncan  
 Connie Dunham  
 Gini Dunlap  
 Jack Dupre and Marsha Vas Dupre  
 Elise Dwyer  
 Brigitte and Norris Dyer  
 Margo Eachus and Rudy Nothenberg  
 Laurel Eastman  
 Edward W. Easton, Sr.  
 Helene and Lawrence Edelman  
 Steve and Pat Edelstein  
 Candice Edmondson and Paul Wirtz  
 Pat Ehrmann  
 Bob and Marcia Eldredge  
 Peter and Heidi Eliot  
 Leslie Ellison  
 Mari and Michael Emmons  
 Christine Engel and Hugh Helm  
 Janet Engelbrecht  
 Enterprise Vineyards, Inc.  
 Barbara Epstein  
 Joel and Karen Erickson  
 Nancy and Gary Erickson  
 Rolfe Erickson  
 Kathleen Erickson-Forder and Graham Forder  
 Thomas Escover and Harriette Grooh  
 Linus Eukel  
 Jeanette and Whitney Evans  
 Pieter and Karen Everard  
 John Ewing  
 Steven Fabian and Judy McCann  
 Donna Fabiano  
 Cary Fargo and Anna Ransome  
 Mark and Jean Farmer  
 Julianne Farrell  
 Carol Farrow  
 Jamy and Charles Faulhaber  
 Louis and Tamara Fehrenbacher  
 Katharine Feidler  
 Lee Feinstein  
 Celeste Felciano  
 Lois and Roland Feller  
 Linda and Gary Felt  
 Stephen and Julia Ann Fenner  
 Juan and Celinda Fernandez  
 Letizia Fernandez  
 Thomas Fetter and Helen Chen  
 Bob and Karen Field  
 Luisa Spencer Finberg  
 Martha and Kenneth Fischer  
 Charles and Sandra Fisher  
 Patrick and Sienna Fisher  
 Tom and Ann Flack  
 Henry L. Flannery  
 Maurice Fliess  
 Matt and Marilyn Flores  
 Matthew Foehr  
 Richard and Carolyn Fogg  
 Burton and Raleigh Fohrman  
 Linda Fraley and J. Geren Nichols  
 Donald H. and Ann Frazer  
 Guy and Beverly French  
 Sabine and Harald Frey  
 Alex and Ann Frick  
 Robert Friese  
 Jack Fritschi  
 Margaret Fuson

Gene Gaffney  
 Gene Gallock  
 Shari and John Garn  
 Harold and Marion Garrett  
 Charles and Terry Gast  
 Lisa and David C. Gauger  
 Penny and Rick Gavazza  
 Liz Gawron and Paul Johnson  
 Jonathan Gay and Misty West Gay  
 Nancy Geary  
 Nancy Gelbard and David Kalb  
 Janice Gendreau  
 Carole Gerst  
 Mark and Judith Giampaoli  
 Laurie L. Gibbons  
 Eli Gifford  
 Diane and Anne Giles  
 Jerald and Virginia Gill  
 Jessica and Kevin Gilleran  
 Helen Gillespie  
 Norman Gilroy  
 Karin J. Gjording  
 Marcia and David Glassel  
 Jim and Michaela Glenn  
 Francis Glennon  
 Dohn and Beryl Glitz  
 Robert and Ginger Glockner  
 Bill Goerke  
 Melissa and Patrick Golden  
 Bruce Goldstein and Vicki Hill  
 Norman and Susan Goldstein  
 Alex Goodman  
 Deborah Goodman  
 J. Christopher Goodman  
 Dr. and Mrs. Stephen Gospe  
 Jeff and Ann Gospe  
 Carl and Donna Gowan  
 Patricia Graffis  
 Michelle Graham  
 Richard and Wendy Grahman  
 Mark and Xandra Grandy  
 Ann Elaine Grant  
 Betty Grant  
 Patrick G. Grattan  
 Barbara Gray and Samuel Leader  
 Jeffrey Gray  
 Donald F. and Cheryl Green  
 Miriam Green  
 Carolyn Greene  
 Jodi Greene  
 Stephen Greer  
 Erica and Ken Gregory  
 Robert H. Grevey  
 Robert Griffin  
 Mac and Helle Griffiss  
 Maureen Groper  
 Karen Guasco  
 Eleanor Guerin  
 Gregory and Mary Guerrazzi  
 Sam and Ava Guerrera  
 Rich and Judy Guggenhime  
 Sherry Gulmon and Harold Mooney  
 Glen and Pamela Gunsalus  
 James J. Gurke  
 Daniel M. and Sarah Glade Gurney  
 Patricia and Anthony Guzzardo  
 Art Haake  
 Tom Haeuser and Antoinette Kuhry

Elizabeth Hafner  
 Grace Pollard Hafner  
 Parke and Sarah Hafner  
 Elizabeth and Randy Hagen  
 Karen Hales  
 Elana H. Hall  
 Leigh and Maxine Hall  
 David Halliday  
 Mary Beth Halsey  
 Alistair Hamilton  
 Roger Hamlyn  
 Neil Hancock and Jenny Blaker  
 Albert G. Handelman, Esq.  
 Marie Kay Hansen  
 Mark Hanson  
 Carole Harbard  
 Steve and Marianne Harder  
 Richard and Kathy Harkness  
 Jon-Paul Harries  
 Kai Harris  
 Pete Harrison  
 James Harwood  
 Kathy Hastings  
 Lee Hastings  
 Ron Hayes  
 Janet and Arthur Hayssen  
 Michael Hedley  
 Jean Hegland and Douglas Fisher  
 Larry and Victoria Heiges  
 Max and Janice Hein  
 George Hellyer  
 Robert and Rebecca Henn  
 Moss Henry  
 Robert J. Henry  
 Thea Hensel  
 Stephen and Aurea Herrick  
 Judge Patricia Herron (Ret.)  
 John Hervey  
 Denise Herzberg  
 Harry Hicks  
 Gail and Robert Hight  
 Thomas Higley  
 Denise Hill and Joe Lilienthal  
 Diana and Jeffrey Hill  
 Darla Hillard and Rodney Jackson  
 Jeff Hinchliffe  
 Myron Hinrichs  
 Linda and Peter Hoch  
 Heidi Hochrein  
 Ingrid Hochrein and Mike Tayek  
 Christine Hoex  
 Mary Hofmann  
 Deirdre Holbrook  
 John K. Holmgren and Elise K. Lomenzo  
 Laura Holms and Michael Martin  
 Andy and Jean Holroyd-Sills  
 John and Geraldine Holt  
 Charles Homcy MD  
 Dvora Honigstein and Mary Sue Philp  
 Perry Hopkins  
 Robert and Toni Hopkins  
 Sanford and Alice Brittin Horowitz  
 Michelle Hoting  
 Michael Houlihan and Bonnie Harvey  
 Theresa House  
 Anderson and Maria Howard  
 Norm Howard  
 Matthew and Joan Howarth

Keith Howell and Paula Smith  
 Keith Hoxeng  
 Elizabeth and George Huang  
 Allan Hulme  
 Stewart and Jane Hume  
 Arlo and Patricia Hummel  
 Beth Huning  
 Tom and Evelyn Hunt  
 Joanne Hurley  
 Thomas Isaak  
 Richard Iverson  
 Jim and Sharon Jackson  
 Richard and Jeanne Jackson  
 Daun K. Jacobsen  
 Grayson James  
 Forrest and Eileen Jang  
 Alfred and Bonnie Janssen  
 Jim Jardine and Bill Mautner  
 Peter Jaret and Steven Peterson  
 Emily Jarosz  
 Kathy Jelin  
 Erik Jensen  
 Janet and Jay Jensen  
 Hilda K. Jobson  
 Alan Johnson, MD and Donna Dolislager, MD  
 Diana and Gary Johnson  
 Gregory and Mary Johnson  
 Karen M. Johnson  
 Marcia and Ralph Johnson  
 Tim Johnson  
 Tom and Marily Johnson  
 Ann and Dave Johnston  
 Marissa and Louis Johnston  
 Karin Jones  
 Stephen K. Jones  
 Jim and Joan Jordan  
 Robert and Linda Judd  
 Paul Judge and Christine Yaeger  
 Charles and Christine Judson  
 Stephanie Kahle  
 Arlene Kallen  
 Janice Kane  
 Lilo Kangas  
 Margaret E. Kaplan  
 David and Helena Kassel  
 Nicole and Marc Katano  
 Carol Katzoff  
 Keith and Marlene Kaulum  
 David Keaton and Linda Cano  
 Holly Kelley  
 Cynthia Kellogg  
 Alana Kelly  
 Joyce Kelly  
 Steve Kemmerle  
 K.A. Kennett  
 Henry and Mary Kenney  
 Douglas and Jami Kerr  
 Charles B. and Judith A. Kimball  
 Pamela Kind  
 Linda Kingsbury and Richard Burg  
 Joseph Kinyon and Jennifer Stock  
 Joe and Barbara Kirkbride  
 Jean and Thomas Kirsch  
 Borell and Janet Kirschen  
 Gretchen W. Kishbaugh  
 Peter and Mary Klabunde  
 Diane Kleinecke and Brett Raven  
 Michael and Sachiko Knappman



John and Johanna Knight  
 Rose Knight and Ronald Simpson  
 Vicki Knirck  
 Debra Knowles  
 Kevin Knowles and Kathy Lowe  
 Debra and Michael Knudtson  
 Brandon Koch  
 Helen Kochenderfer  
 Virginia L. Koenig  
 David Kohlmeister and Amy Mortensen  
 Margaret Kolar  
 Robert and Joy Kolker  
 Doris Kolln  
 Deborah Kord  
 Greg Korelich and Linda Osher  
 Lucy Kortum  
 Joanne and Steven Kovely, Jr.  
 Michael Kraus and Nancy Sasser  
 Timothy Krauss  
 William and Susan Krawetz  
 Thane Kreiner and Steven Lovejoy  
 Deborah and Lloyd Kreuzer  
 Max L. Kroschel  
 Bill and Beth Krumbein  
 Rebecca Kuga and Irene Gilbert  
 Ben and Eileen Kutnick  
 Serge and Cheryl Labesque  
 Rudy Lacoé and Marguerite Hammett  
 Elizabeth Lane  
 Steven and Monika Lang  
 Stephen J. Langs  
 Sarah Lansing  
 Paul and Maureen Larson  
 Terry and Karen Larson  
 Virginia Laughlin  
 Jenny Lawrence  
 George and Ann Lawson  
 John Leahy  
 Louisa Leavitt  
 Susan J. Leber and Richard Korff  
 Leff Construction  
 Jerry Leisure and Joy Broom Leisure  
 Lamar Leland  
 Mary Lemon  
 Robert and Janet Leonard  
 Jack and Marsha Leutza  
 Roger Leventhal and Helen Wagenvoord  
 Peter and Olivia Leveque  
 Jerry Levy  
 Randy and Louise Lieb  
 Julie Lind  
 Joe and Debra Link  
 Lorraine and Bill Linstrom  
 Joel Linzner and Teresa Picchi  
 Jackie Littee  
 Donna Lockhart  
 Scott and Karen Lockhart  
 David Loeb  
 Maureen Lomasney  
 Ruth Lombard and Trymon Hunter  
 Myron London and Lucinda Ford  
 Bill and Tieli Long  
 Denise and John Loomis  
 Leslie Lopato and Skip Getz  
 Kenneth Louden  
 Richard and Phyllis Lowe  
 Simon and Anne Lowings  
 Elinore and Wallace Lowry

Frances Lum  
 Arch C. Luther  
 David and Julie Lydick  
 Kate Lykins Brown  
 Jim and Sharon Lynch  
 John Lynch and Lisa Feldman  
 Stephen Mack  
 Penny MacKenzie  
 Sheila Mackintosh-Sims  
 Mary Maddux-Gonzalez  
 Wayne Madgett  
 Louise Madrid  
 Eugene Mai and Patricia List  
 Cecily and David Majerus  
 Robyn Makaruk  
 Michael Malbasa and Susan Ross  
 Malcolm Jones  
 Lewis Manchester  
 Virgilia F. Mapa  
 George L. Marchand  
 William and Mary Marcussen  
 Anastassios and Maya Margaronis  
 Linda Marietta  
 Denise K. Martin  
 Fred and Joan Martin  
 Lynn Janet Martin  
 Michael Martin  
 Paul Martin and Patti Kozlovsky  
 Mary K. Martinez  
 Patricio Mascorro  
 Cinda Mast-Gough and Michael Gough  
 James Mathews  
 Mark A. Matthews and Valerie J. Marshall  
 Elke Matzen  
 Nancy Mavis, MD  
 Colleen May  
 Tim Mayer  
 Alan Mays  
 Jim and Sandy McAdler  
 Beverly B. McArthur  
 Alison and Mitch McAlpine  
 Bill and Louise McCann  
 Ottley and Danielle McCartney  
 Eugene and Rosemary McCreary  
 William and Josephine McGann  
 Paulette and James McHugh  
 Mary McInerney  
 Richard McKee and Karen Fink  
 Jim McKerrow and Marty Hales  
 John McKinney and Sue Campbell  
 Chuck and Barbara McLaughlin  
 Kevin McLin  
 Steve and Heidi McNeal  
 Joe McQueeney  
 John McSween  
 Isabel Meisler  
 Barbara Meislin  
 Craig Meltzner and Elaine Walter  
 Thomas Menzies and Betsy Karrer  
 Michelle Mercer and Bruce Golden  
 Joan and Richard Merriss  
 George and Marilyn Mertens  
 Bob Miller  
 Clay and Ellen Miller  
 Joanne and Barbara Jean Miller  
 Mary Anne Miller and James Suekama  
 Gary Mills  
 Mike and Elizabeth Minigan



Mountain lion captured on  
 our wildlife corridor camera.

Joe and Signe Minuskin  
John Mock and Louise Brewer  
Eldon and Dixie Modisette  
Sharon L. Modrick  
Marcella Moloshco  
David and Cheryl Moore  
Thomas and Mary Moore  
Laura Morgan and Jim Seward  
Ron and Kathy Morgan  
Susan and Roger Morgan  
Grant Morris and Judith Staples  
Dolores Morrison  
Leonard Mott  
Moyra Moy  
Scotty Muira and Jim Ethridge  
Ed and Arlene Mulligan  
Mirja and John Muncy  
Michael and Ellen Mundell  
Dr. Douglas Munro  
Kris Murphey  
Lynne Murphy and Richard Hay, Jr.  
William and Nancy Murray  
Neil and Lorna Myers  
Stephanie and Roger Nacouzi, MDs  
Lawrence Nagel  
Steve and Valerie Nagle  
Ann Nally  
Peggy Nance  
Anna Narduzzi  
Peter and Arlene Narvaez  
Bob Neale  
Daniel Needham  
John and Nancy Neerhout  
Fawn Nekton  
Mike Nelligan  
Len Nelson  
Corinne Neuman  
Sharon and Richard Nevins  
Marianne Newman  
Edith R. Newsome  
Elizabeth Newton and Tong Lai Ginn  
Richard and Brenda Nichols  
Shannon Nichols  
Sheila Nichols  
Arlene Nicholson  
Robert and Sally Nicholson  
Jane Nielson and Howard Wilshire  
Al and Phyllis Niklas  
William K. Nisbet  
Jack and Hope Nisson  
Deborah and Tadashi Nitasaka  
Donna Nittinger  
Rhoda Noall and Charles Reinhold  
Susan Winston Noble  
Fiona Nolan  
David Noller  
David and Grace Noyes  
Dan Nuebel and Karen Thompson  
Ed and Marcia Nute  
Marcia and James Nybakken  
Vera and Walter Obermeyer  
Daniel O'Connor  
Barbara Saarni Oddone and Pier Oddone  
Jean O'Donnell  
Hideko Oga  
David Ogden  
Remigius H. Ojong  
Jill T. Olsen

Maurine Olson  
Tom and Trish O'Neill  
Darrell T. Orebaugh, Jr.  
Jeffery Orth and Nancy Peter  
Mary K. Oswald  
Richard Otter  
Laura Owens  
Emily Ozer and Antony Fields  
Judith Pace and Sam Zuckerman  
Matthew M. Page  
David G. Parker  
Doris Parker  
James Parker  
Reny Parker  
David and Susan Parkinson  
Leighton Parks  
Benjamin Parmeter, MD  
John J. Parodi  
Donald and Joyce Parsons  
Ellen Gill Pastore  
Ariel Patashnik  
Michelle Paul  
Paula and Jeff Pearce  
Terry Peckham  
John Pelkan  
Buddy and Arline Pepp  
Geoff and Deborah Perel  
Steven Perkins  
Victoria and Charles Perkins  
Dean and Stefany Perlman  
Robert Perlmutter  
Alexander and Ann Peters  
Joyce Peters  
Richard Peters  
Jacqueline and John Petersen  
Ray and Ettamarie Peterson  
Val Peterson  
Linda Petrulias  
Miriam O. Phillips and Charles N. Eley  
Linda Picchi  
Shailer Pickton  
Andrea Pierotti  
Ralph and Tecla Pierotti  
Betty Pigford  
Alan and Sandy Piotter  
James and Sherian Piper  
Stuart P. Pivnick, PhD and Alice L. Akawie  
Patricia Plowman  
Gary F. and Jean Pokorny  
Lee Pollard  
Rhoann Ponseti and Stefan Jonson  
Peter Poullada and Nancy Sheppard  
Jay Poushey  
Matt Praetzel  
Michael Princevalle and Nancy Lloyd  
Candice and William Promes  
Linda and Alan Proulx  
Larry and Cynthia Pullin  
P.A. Pulvirenti  
Ellin and Ned Purdom  
James Pyskaty and Crystal Cox  
Chuck and Kati Quibell  
Noel Quinn  
Steve and Lynnie Rabinowitch  
Caroline Ramberg  
Roberta Rams  
Janet Randall and Bruce MacEvoy  
Jenny Randall

R. Sean Randolph  
Patricia and Gilbert Raposo  
Jonah Raskin  
Loren and Margaret Raymond  
William and Suzanne Rayner  
Bruce Rector  
Redwood Psychological Association  
Patrick Reeves  
Charles and Patricia Regalia  
Brian T. Regan  
Valerie Reid  
Mike and Judi Reilly  
Dick Reinhardt  
Katherine and Alan Reinke  
Nan and Bruce Reitz  
Edward and Bobbie Remedios  
Bill and Sue Remick  
Ray and Sandra Remy  
Samantha H. Reslock  
Laurel P. Rest  
Thomas Reynolds  
Roger and Diana Rhoten  
David and Barbara Rice  
Scott and Marta Rich  
Neville and Lila Rich  
John Richards  
S. Brantly and Nancy Richardson  
Joe and Kathy Riedel  
Jonathan Riley  
Robert Ritchie  
Barbara Robbe  
Carol Robertson  
Nancy Roche  
Jack and Katie Rohrman  
Michael and Sheila Rokeyach  
David E. Root and Marilyn Wolf  
Elisa Rosa  
Elsa Rosenberg and David Zuckerman  
Stephen and Martha Rosenblatt  
Alan and Gail Ross  
Joan and Kevin Ross  
Annette and Craig Roth  
Robert Rottmayer  
Nancy and Larry Rowinsky  
RSF Social Finance  
Richard and Anne Ruben  
Monique and Robert Rubin  
Peter Rubin  
Kitty Rudman  
Bill and Pat Ruehmann  
Peter Rummell  
John and Keri Ryan  
Patrick and Barbara Ryan  
Anthony Sadoti and Susan Stover  
Ralph Samuelson  
Aimee Sands-Carney  
David and Sally Sanger  
Norman and Gladys Sanguinetti  
Arlene and Jerry Sarquis  
Kate Sater  
Mary Savage  
Lisa Sawyer  
Jeddie Scardino and Lloyd Laub  
Janice and Ralph Sceales  
Stephen and Jean Schapp  
Scott Scheffer and Marian Wolfe  
Yvonne Schell and Steve Miller  
Jewell Schiess

John and Nancy Schiller  
Lydia Schindler  
Julia Schneider  
Sarah Schnitger  
C. Ferdinand and Gretchen Schoch  
Paul and Patty Schoch  
Joseph B. Schubert  
Helen Schulak  
Staff of Charles M. Schulz Museum  
Anne Schwarzer  
John Schwonke  
Ralph and Janis Scott  
Robert Scott and Tim McDonald  
Gary Searby  
Mary Seastrand  
Chere and Eric Secrist  
Sederberg-Calk Charitable Fund  
Brien and Anne Seeley  
Paul Segre and Megan Stefanki  
Ed and Suzanne Sellai  
David and Patricia Senner  
Joy Shaffer  
Neil and Karin Shakery  
Sandra Shannonhouse and Arthur Schade  
Karen Shapiro  
Steve and Anne Shapiro  
Daniel Sharp and Lynne Leopold-Sharp  
John Sheehy and Laurie Szujewska  
Ingrid and John Sheets  
Thom and Lois Shelton  
Lynn Sherard-Stuhr  
Robert and Joan Sherwood  
Kathleen Shiels  
David Shoemaker and John Thomas  
Peter and Mary Kay Sidell  
Alan Siegle and Shelley Brown  
Eleanor Silberman  
Martin and Ellen Silge  
Lorie Silver  
Bill Simerly  
Linda and Robert Simon  
Wendy A. Simon  
Ursula Simonis  
Edith Simonson  
David Sims  
W.I. Sinclair  
Karen Anne Sinell  
Marianne A. Skinner and Ed Weber  
Arthur and Judith Slater  
Christopher Joseph Slocomb  
Ruth E. Smilan  
Barry Allen Smith, MD  
Amy Smith  
Betty Smith  
David L. Smith and Bonnie Martin  
Doreen and Vernon Smith  
Ken Smith and Lucia Christopher  
Patrick Smithson  
Marc A. Snyder  
Edward and Moira Sornstein  
Aletha Soule  
Amy Southwick  
Carole Spalding  
Margaret Spaulding  
Katherine Speas and Todd Board  
Roger and Mary Spence  
Patricia Spicer  
David and Donna Spilman

Martha Stabler  
Rebecca Stadtnier  
Paul Stange  
Jim and Pat Stark  
Jane Steel and Thomas Buckmaster  
Adam Stein  
Arnold Stellema and Nannette Meyers  
Jeanne Sternbergh  
Helen Stevens  
Hugh and Diane Stevenson  
Ellen Stillman  
Dave and Kathy Stock  
Maggie Stockel  
David and Jane Stone  
Ronald and Joyce Stone  
Scott Stone  
Linda Stout  
Fred Strauss  
Sandra Stribolt  
Wendy Struhl  
Vic and Chemi Suard  
Randolph and Marged Sugarman  
Sally Sutherland  
Russell Sutter  
Steve Sweaney and Judy Withee  
Michael and Rorie Sweeney  
Louellen M. Sweinhart  
Marc Sylvester  
Margaret Szczepaniak  
Martin Takimoto  
Cynthia Tasker and Robert Conners  
Brian Tauzer  
Mary Taylor  
Troy and Lauren Taylor  
Lory and Dana Teicheira  
Adair and Brian Tench  
Linnea Tennison  
Gladys Thacher  
Dolores and Neil Thistle  
Mary Frances Thomas and Mimi Pulich  
Steve and Janice Thomas  
James and Linda Thomason  
Ann and Edward Thompson  
Ellen Thompson and Vic Wright  
Robert Thompson  
Ward and Patricia Thompson  
Donald and Barbara Thoreson  
Monna Throop  
Heather Thurber  
Judith and Harold Ticktin  
Lisa and Sebastian Titus  
Don and Marilyn Toms  
Kathleen Torgeson and Ron Marley  
Marsha Torkelson  
Margaret Tourje and Jane Krensky  
Larry Tracey  
Tim and Laurie Trainor  
Everett and Ilene Traverso  
Esther Tribe  
TricorBraun  
Randell Tuell  
Ransom and Marilyn Turner  
Katherine Twain  
John and Patricia Twardy  
Twin Pine Casino and Hotel  
Francesca and Herbert Tyrnauer  
Greer Upton and John Watrous  
Lynn and Brad Valentine



Karen Van Epen  
 Don and Lee Van Giesen  
 Pamela Vanderbilt  
 Jan Vannucci  
 Susan and Steven Vargas, MD  
 Merrill Vargo and Douglas Martin  
 Kathy Vaslet  
 Maria Sarah Vella  
 Sally Vella  
 Mark Vernon  
 Charles and Pamela Vetrano  
 Jocelyn Vick  
 Randall and Kathryn Vincent  
 Clark Vogeler and Jen Lo  
 Nancy Vytlačil  
 Isabel Wade and Jan Chernoff  
 Cristina Wadsworth  
 Richard and Susan Wagner  
 Dorothy Walker  
 Jed Wallach  
 Judith and John Walsh  
 James and Dorothy Walters  
 Tanis Walters  
 Lauren and Mary Margaret Ward  
 Thomas Warton  
 Andrea and Grant Weaver  
 Ralph and Rosalie Webb  
 Ronald and Nanci Webb  
 Nancy S. Wecker and Lisa Wuennenberg  
 Karen Culler and Tom Weidinger  
 Jonas Weil  
 George Weiler  
 Judy and George Weiner  
 Steven Weiner  
 Barry and Robin Weinzev  
 Reuben Weinzev and Padi Selwyn  
 Arlene and Bob Weis  
 Michelle Welch  
 Judith Wells  
 Roger Wery  
 Cynthia L. West  
 Laura Westerling  
 Wetlands and Water Resources  
 Gretchen Whisenand  
 Cath Whistler  
 Debra and Rich Whitall  
 Henry White and Diane Bedecarre  
 Kevin White  
 David Whiteley and Christine Finlay  
 Richard Whitkus  
 Doralyn Wicklund  
 Jane and Richard Wicklund  
 Andrew Wieszczyk  
 Lawrence A. Wilcox  
 Christine Wilder  
 Donald Williams  
 Andrea Selieta Williamson  
 Ward Willis and Leisa Demostene  
 Colleen and Mark Wilson  
 Michael and Jane Wilson  
 Sandy Wilson  
 Michael and Robin Winton  
 Richard and Sharon Wise  
 Jeff and Jo-Lee Wishner  
 Michael and Jane Witkowski  
 Andrew and Betsy Witthohn  
 Martha and Norman Wohlken  
 Linda and Steven Wolan

Sally M. Wood  
 Richard Woodman and Mia James  
 Ginny and Bill Woolley  
 Carolyn Worley  
 Chip and Anne Scott Wray  
 John Wright  
 Alfred and Julia Wurglitz  
 Keith Yamamoto  
 Thomas Yarish and Laure Campbell  
 Gregory Young and Jean Davis  
 Joan and Arlan Young  
 Karen Young and Lucinda Romero  
 Louise Young  
 John Boarman  
 Jay Youngdahl  
 Robert Youngs  
 Alexander Yuill-Thornton II  
 Scott Zapotocky and Sarah Tendall  
 Larry Zech  
 Alan Zeigler  
 Robert and Dolores Zeni  
 Susan Zeni  
 Alan C. Zetterberg  
 Myron Zimmerman  
 Barbara Zook  
 Matthew Zwerling and Patresa Rollingier

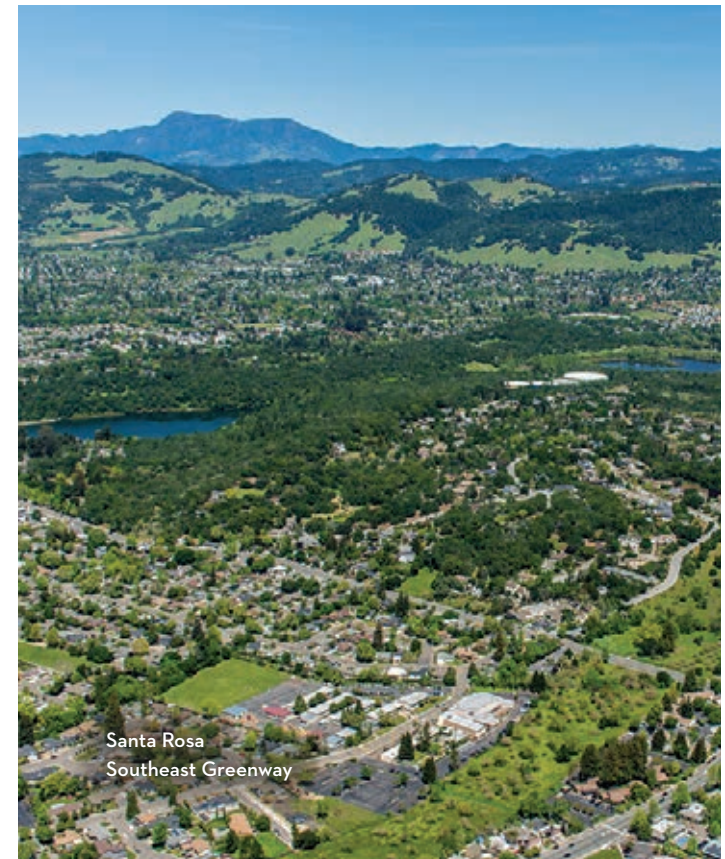
**\$50-\$99**

Anonymous (5)  
 Janice Abreu and Phil Kay  
 Nancy Abreu  
 Roberta Acker and Ellen Scarr  
 Daniel P. Adams  
 Richard and Margo Addison  
 Ketty Akesson-Steiness and Peter Steiness  
 Scott Alonso  
 Amazon Smile Foundation  
 Jeffrey Ames  
 Seth D. Ammerman  
 David and Catherine Anderson  
 Ellen Anderson  
 Ian and Sonda Anderson  
 Jacqueline Annes  
 Barbara Arbunich  
 Janis Arendt  
 Rodrick and Rita Arriaga  
 Lorraine Ashton  
 Suresh Atre  
 Norma A. Austin  
 Johanna Avery  
 William and Karen Babula  
 Barbara Baer and Michael Morey  
 Bill Baldewicz and J.C. Lipzin  
 David Bannister  
 Carol Banquer  
 Jeanette Berekman  
 Lance and Judith Barlas  
 Bobette Barnes  
 Teresa Barnes  
 Darlene Barrett  
 Don Bartling  
 Ralph W. Bastian, Jr.  
 George and Larisa Batchelder  
 Martin and Judith Bauman  
 Olive Bavins  
 John and Jean Baxter  
 Catherine Bayer  
 Yvonne Beckmeyer  
 Marcia Bellforte

Michelle Bellefeuille  
 Jerry and Jane Bender  
 Joyce and Brian Bender  
 Edward Bennett  
 Orienne Bennett  
 Loretta Bentancourt  
 Paul Berg  
 Jane and Arthur Bergen  
 Charles Bingaman  
 Robert and Ann Blacker  
 Richard Bloom and Bridget McCoy  
 Ellen Blustein  
 John Boarman  
 Suzanne Bond and Ken Stueben  
 Iris Borg  
 Janet Bosshard  
 Barbara Boucke  
 David Boudreaux  
 Thomas and B. Beth Bourret  
 Sharon Bouton  
 Yvonne Bowers  
 Kitty Bownass  
 Elizabeth Boyer and Harry Engel  
 Robert J. Brannigan  
 Joanne and Louis Braun, Jr.  
 Mary Brett  
 Bridget Brewer  
 Jane Breyer  
 Karen Brocco and Vivien Hillgrove  
 Nita Brock  
 Geraldine Brown  
 Michael Ann Brown  
 Ronald Brown  
 Alan Brubaker  
 Kathleen Bryant  
 Ruth Burke  
 Paula and Tim Burkhart  
 Pat Burns  
 Calandra Bush and Lou Gouveia  
 Rebecca Butler  
 William Byerley  
 Charles Caffarella  
 Dennis Calabi  
 Christine Caliendo  
 Pat Callahan  
 Lydia and Tony Cameron  
 Sheri Cardo  
 Michael and Melanie Carlston  
 Nancy and Steven Carpenter  
 Carol Carr and Jim McElroy  
 Sheila Cauldwell  
 Donna Cavin  
 Carol Cenci  
 Stephanie Chalmers  
 Thomas Chamberland  
 Patricia Chan  
 Tanya Charter and Greg Shore  
 Miranda Chatham  
 Linda Ciavonne  
 Linda Clark  
 Suzanne Clarke  
 William and Sara Clegg  
 Linda S. Clopton  
 Deborah Coe  
 David and Dorothea Cole  
 Ted Coleman  
 Carol Colridge  
 Evelyn Connolly

Peter and Carolyn Connors  
 Adrian Conte  
 Randall Cook  
 Susan Cordes  
 Corrick's  
 Melissa and Bill Cox  
 John and Mary Cregan  
 Sandi Cullinen  
 Ken Cushman  
 James Cutcher  
 Patricia Beus Daffurn  
 Candice and Robert Dahlstet  
 Patrick and Lana Daley  
 Beth Darrow  
 Tada Darsie  
 Donald D'Avanzo and Deborah Salomon  
 Linda Davis  
 Arthur and Jill Dawson  
 Sherri L. de Coronado  
 Mike and Luci De Soto  
 Beth-Marie Deenihan  
 Chuck and Mary Degagne

Jay and Jody Deike  
 Peter deKramer  
 William and Janine DeMartini  
 Bill and Sue Denevan  
 William DeVaughn  
 William D. Devlin  
 Karla Di Grazia  
 Jeff Diamond and Amy Zimmer  
 Jim and John Dierke  
 Rob and Mary Disharoon  
 Darlene and Richard Donat  
 David Donnenfield  
 Fairfax and Giovanni Donovan  
 John Doolittle  
 M.L. Doucette  
 Arthur Douglas  
 Laraine Downer  
 Paula Downing  
 Lynn and Joe Drake  
 Prue Draper  
 Linda and Charles Drew  
 George and Nancy Duncan



Charles Dunkel  
 Bette Durham  
 Alison Dykstra  
 George and Colette Eade  
 Michelle Eaton  
 Theresa and Robert Ehr  
 Louise Eisen  
 Peter Elias and Mary Williams  
 Deborah Elliott and Glenn McCrea  
 Bill English  
 Julie English  
 Jodi Epstein  
 Dick and Kathleen Eschleman  
 Jane W. Evans  
 Melinda Evans  
 Silas S. Everett  
 Phyllis Faber  
 John Fairbank  
 Yvette Fallandy  
 Katharine Fanning  
 James Hafner Farrell  
 John Cole Farrell  
 Robin Fautley  
 Izetta Feeny  
 Gus Feissel  
 Charles Ferrall  
 Jody Fessler  
 John and Mary Field  
 Leslie and Gerson Finley  
 First Congregational Church of Sonoma  
 Linda Fisher and Leah Norwood  
 Sharon Fisher and Keith Evans  
 Alice Ford-Sala  
 Ann Foster  
 Steve Fowler  
 Farida Fox  
 Cathleen Francisco  
 Ellen Frank and Joe Majer  
 Wendy and Andrew Frank  
 Philip Frankl  
 Joanie Freeman and Gregory De Santis  
 Laurie and Bill Friedeman  
 Walter and Josefine Frommel  
 Stephen Fuller-Rowell  
 Miguel A. Furman  
 Susan Gadbois  
 Karen and James Gaffney  
 John and Wendy Gallagher  
 Fay Gallus  
 Flora Ganzler  
 Jackie Gardener  
 David Gardiner  
 L. Marvel Gardner  
 Mary Gardner  
 Todd Garrett  
 Jared Garrison-Jakel  
 Elizabeth Garsonnin  
 Pamela and Wayne Gehrke  
 Donna Geiger  
 Irmgard and Heinz Gerstle  
 Rebekah and Thomas Gilpin  
 Joseph Giovinco  
 Robin K. Glazer  
 Stanley Gold  
 Joe Goldsmith  
 Kristin Gornick  
 Edward Gould and Elaine Adamson  
 Gerald and Sheila Gould

Gil A. Grangier  
 Alan and Anita Grant  
 Dana Grantham  
 Phyllis Gray  
 Mark Green  
 Janet Greene  
 Cynthia Gregory  
 Martin and Joyce Griffin  
 Terri Griffin  
 Bill and Carolee Grummer  
 Geraldina Grunbaum  
 Rhonda Guaraglia  
 Frieda Guercio  
 Janet Guidotti  
 Janice Gullarian  
 Richard Gutierrez, Sr.  
 Larry and Jackie Gutsch  
 Phyllis Guttman  
 Karin Guzman  
 Richard Hacker  
 Beth Hadley  
 Lori Hafner  
 Katherine Hale  
 Linda and Keith Hale  
 Loren Hall  
 SkyeHa Hallberg  
 Jennifer W. Halleck  
 Bill and Flora Haluzak  
 Lisa and Terry Hammon  
 Ronald Hansen  
 Michael and Cynthia Harmon  
 David Harris  
 Jenifer Harris  
 Paul Harris  
 John Harrison  
 Kathleen Harrison  
 Charles Haseltine  
 Ed Hasson  
 Joann Hawk  
 Laura Hawkins  
 Joya Heart  
 Sarah and David Hehman  
 Scott and Claudia Hein  
 Robert and Eloyse Held  
 Christie Heller  
 Ellie and Bob Hermann  
 Loretta Hibbard  
 Dara Hill  
 David R. Hill  
 Don and Ann Hines  
 Renee and Jerry Hinson  
 Susan Hinstorff  
 Elizabeth Hodder  
 Frank and Dianne Hodges  
 Karen Holbrook  
 Arthur and Jean Holden  
 Mary Holder  
 Dana Hooper  
 Whitney Hopkins  
 Karen Horii  
 Yvonne Horn  
 Kathy Hotchkiss  
 Larry Houghton  
 Karen Howard  
 Lynn and Stephen Hoyle  
 Tony Huff and Dawn Johnson-Huff  
 Nancy H. Hughes  
 Lisa Hunter

Alexa and Calder Hutcheson  
 Elmarie Hutchinson  
 Holly Hutter  
 Dale Ikeda  
 Claudia Irwin  
 Ray Jackson  
 Deborah Jacobi  
 Sarah James  
 Albert and Sharon Janulaw  
 Norma Jellison  
 Paula and Stephen Johnson  
 Don and Louise Johnston  
 Douglas Johnston  
 Robert and Arline Jones  
 Mary Elizabeth Jue  
 Charis and Bruce Kabat  
 Kevin Kahn  
 Naydra Kauwe  
 Ken Kawaichi  
 Robert Kehn  
 Karen and Wayne Kellam  
 William and Mary Keyser  
 Nav Khalsa  
 Ethel and Keith Kirk  
 Marie Kiser  
 Darla Kobza  
 Judith Koehler  
 John and Carole Kolnes  
 John and Debbie Koons  
 Karol Kopley  
 Kathleen Kraemer  
 Jude Kreissman  
 Jason Krist  
 Barbara Kully  
 Elizabeth Kutska and Paul Genovese  
 Philip La Parne and Luann Schend  
 Andrew LaCasse  
 Thomas and Sally Lambert  
 Joan Lamphier  
 Laurence Landa  
 Scott Landers and Leah Gold  
 Miriam Landman  
 Joseph Lang  
 Sean and Chris Lanham  
 Michael W. Lardner  
 Asenath LaRue  
 Jamie E. Laster  
 Curtis Lawler  
 Kathleen Lawton  
 Felicie Leech  
 Darlene Leffler  
 David F. Leland and Ann Howald  
 William and Paget Lenarz  
 Dan Lennon  
 Rosalyn Lepley  
 Sarah Cameron Lerer and Jim Lerer  
 Robin Levander and Kyriakos Spentzos  
 Howard Levy  
 Donald Linch  
 Liz Linde and Walt Hays  
 Ann Linder  
 Mary and Stephen Lindsay  
 Norma Sarah Liner  
 Carol Lingman  
 Gary Lipking  
 Marcus Lipton  
 Liz Loebel  
 Carolyn Lord

Kate Lothyan  
 Liz Lotz  
 Christine Love  
 Rockwell Lowe  
 Kathleen Lucido  
 Donna Luckey  
 Christel Lukoff, PhD  
 Nola Lundy  
 Rick Luttmann  
 Lois and Harry Lutz  
 Christopher Lydon  
 Eugene and Rebecca Lynch  
 Molly Lynch  
 Charles MacDonald  
 Marti and Karen MacInnes  
 Barbara and Don Madson  
 Nancy Malon  
 Eileen Ann Maloy  
 Jay Mandell  
 Manuel's Maintenance Service  
 Laurel and Gary Marcus  
 Charles Markee and Linda Sims  
 Catherine Markham and Ezekiel Neeley  
 Rosemarie Marks  
 Jonathan Marmelzat  
 Darla Marsi  
 Frederick Marsi  
 Kazuo R. Maruoka  
 Paul Maysonave  
 Maria and Richard Mazer  
 Taylor McCandless and Thomas Conlon  
 Andrew and Barbara McCarthy  
 Melinda McCutcheon  
 Mark R. McDonell  
 Lynn McGarvey  
 Robert and Ann Marie McGee  
 Patricia McGinty  
 Wendell McHenry  
 Ann McIntyre  
 Jeffrey and Cameron McKinley  
 Lorraine and Howard McKinley  
 Patricia McLaughlin  
 David McLean  
 Bud McMahan  
 Patrick and Wanda McManus  
 Stephen and Christine Meacham  
 Teri Meadows  
 Bill and Winifred Medin  
 Jane Medley  
 Gerard Paul Meehan  
 Jim Melancon and Gary Lissow  
 Monica Anne Menco  
 Barbara Micallef  
 Sherry Michael  
 Eileen Mickaelian  
 Donald and Jacque Mielke  
 Jeanetta and Charles Miller  
 Kathleen Miller and Molly Dillon  
 Michael G. Miller, Judy Kenneally-Miller and  
 Kendra Miller  
 Tim Miller  
 Brenda B. Milton  
 Glenn and Franny Minervini-Zick  
 Corinne Monahan  
 Robert Moody  
 Irvin and Carolyn Moore  
 Janet Arlene Moore  
 Margaret and Michael Moore  
 Sonja Morris

Anthony Mountain and Cheryl Maynard  
 Courtland S. Mudge  
 Dan Mulkey  
 Paul and Leslie Mulligan  
 Joan Murray  
 Kimberly Musser  
 Nicole Myers  
 Pieter and Marya Myers  
 Richard Navarro  
 Eric Nelson  
 Ursula Nibblett  
 Jennifer Nichols  
 Ken and Karin Niehoff  
 Tom Nixon  
 Sheila and William Nolan  
 Phil and Elsie Northen  
 Katherine Norton  
 Jeanne Nourse  
 Lisa Nowell  
 Margie and Bruce Obendorf  
 Colleen and Mark Obergfell  
 Rio and Arrow Olesky  
 Kurt and Maraline Olson  
 Jane and Mark Otsea  
 Susanne Otteman and Myrna Goodman  
 Nancy and John Packard  
 Monica Padilla  
 Frank Pagnamenta  
 Christina Panza  
 Thomas Paoli and Margaret Coyne  
 Stephen Douglas Parsons  
 Bernard and Patricia Passemar  
 Anna Paul  
 Elke and Douglas Paul  
 Greer Paulsen-Dooan  
 Lois Pearson  
 Diana Pennington  
 Carolyn Perkins  
 Joel Perlstein  
 Richard L. Perman  
 Lee Perron and Judy White  
 Michael S. Peters  
 Tom and Christine Peterson  
 John J. Petrakis  
 Frederick and Melouise Pfeffer  
 Steve Pfeiffer and Marsha Hosack  
 Steve Pierce  
 Russell Pinto  
 Alex W. and Patricia Pleasic  
 Danell Pomin  
 Sally Pooler  
 Penelope Porch  
 Wendy Powell  
 Mary Powers  
 John Proctor  
 Marlene Radigue  
 Barbara Rael  
 Geneva Randall  
 David Rapp  
 Cody Rasmussen  
 Joshua Rassen  
 David Rawlinson and Karen Rogers  
 Patrick and Maxine Reagh  
 Jan Reddick  
 Mary-Elizabeth Reeve  
 Art and Elaine Reichert  
 Regina Reilly  
 Judith Reimuller



Michael Reinhard  
Steve Reinstein  
Barbara and David Rice  
David A. and Mary D. Rice  
Luanne Rice  
Diane Richards-Olson  
Kathleen Robbiano  
Roger and Dorothy Roberts  
Rhonda H. Rockwood  
Dennis Rodoni  
Robin Rogers  
Astrid Romanini  
Tom Romano and Linda Gilbert  
William J. Ronchelli  
Gregory and Linda Rose  
Jayne Rosenberg  
Janet Ross and Patrick Whitfield  
Elisabeth Rossi  
Susan Roth  
Elisabeth Zinck Rothenberger  
Helen Rudee  
Robert Rudorf and Amelia Belle  
Gary Rydstrom and Cindy Lowney  
Rob Rynski  
Noveed Safipour  
Sanjay and Champa Saigal  
Majid and Helen Salemi  
Monica Sallouti and Carlie Wilkerson  
Sally Sands  
Rich Sandvick  
Claire Sapiro  
Ralph H. Saunders  
Carol Savio  
Amy Sawday Kramer  
Mary Schaefer  
Sarah Schaeffer  
Wayne and Cecelia Schake  
Aileen Schmidt  
Doug and Pamela Schrock  
Schön Schurecht  
Paul Schwarz  
Dean Scott  
Kevin Sea  
Lawrence Shapiro  
Mitchell and Ruth Shapiro  
Greg Sharpe  
Leonard and Judith Shaw  
Norm Shea  
Trisha Shew  
Lia Shigemura and Helen Zia  
Teri Shore  
Dwight Sims  
Tom and Marjorie Sims  
Paul Siri and Kate Bolton  
Carol Skold  
Oren Slozberg  
Geoffrey Smith and Camille Armstrong  
Mallory Smith  
Susan Snow  
Denise Sobel and Tom Oczkowski  
The Solem Family  
Barbara Spain  
Gail Dubinsky Spielman, MD  
Lynn and Eugene Spivak  
James Stamp  
Betty Stanfield  
Erika Steffe and Don Herold  
Chandra Stephens

Heloise Stewart and Susan Coleman  
Susette Stickel-Rufer and Michael Noël  
Janet Strobel  
Ross E. Stromberg  
Norman Strong  
Sharon Stuart  
Susan Sudduth  
Philip Sullivan  
Jacqui Sweet  
Marilyn Swire  
Grant and Kona Lei Syphers  
James and Elinor Taylor  
Kristin and Greg Thigpen  
Kathleen Rose Thomas  
Samantha Thomas  
Linda Tiffany and David Solnit  
Julie Tingle  
Barbara Tjernell  
Emelie Tolley  
Andrew Trippel  
Dale and Elaine Trowbridge  
Phil Trowbridge and Gertrude Reynaud  
Shannon Tubridy  
Gilbert Tully  
Art Valencia  
Linda Vallee  
Dixie and Martin Van der Kamp  
Peggy L. Vaughan  
Carolyn Verheyen  
The Viking House at Jenner  
Leslie Vivian  
Jeff Volmerding  
George von Haunalter  
Karen and Jerome Wagner  
Sylvia Wake-Hood and Jim Hood  
Eric Walborsky  
Carolyn Walker Shaw  
L. Reed and Marilyn Walker  
Walter Wallace  
Eileen Walsh  
Joseph Wasilewski and Karen Barrett  
Mike and Jamie Waterman  
Janine Watson  
Suzanne Weakley  
Linda and Jim Weathers  
Alice Webb  
Kenyon Webster  
Lorraine A. Wedekind  
Roger and Eileen Weeks  
Elaine Weihman  
Phil Weil  
Shirley Weisman  
Penny Wells  
Jim Whalen  
Bert Whitaker  
Carol and BK White  
Lavawn Whiting  
Roland Wiebe  
Dawn Wilburn-Saboe  
Kathi and John Wildman  
Kenneth Wildnauer  
Janet Wile  
Charles Williams  
Larry Williams  
Chris and Teri Wills  
Bonnie Wilson  
Susan Winer  
Giel and Marie Witt

Pat Wong  
Thomas and Mary Wood  
Shana Woodfield  
Cora and Tom Wright  
Tenley Elizabeth Wurglitz  
Bradley and Isabelle Wyatt  
Barbara Lee Wylie  
Debbie Wymer  
Rand Yazzolino and Lorin Loughlin  
Helene York  
Sharon and Jim York  
Betty Young  
Robert Young  
Suzanne Young  
Andrew Zarrillo  
Beryl F. Zimmeroff  
Kate and David Zocchetti

**\$1–\$49**  
Anonymous (2)  
Susan Ackerman  
Amy Allis  
Mark Andrews  
Nicholas and Marcia Anton  
Philip and M. Katherine Arnaudo  
Firouzeh Attwood  
Raymond and Patricia Baker  
Jeanne and Anthony Ballestero  
Joanne Bartolomei  
Barbara Baumgardner  
Joseph and Karen Beall  
Chris Bekins and Kurt Eichstaedt  
Linda and Alan Bell  
Laura Berke  
Bruce Berkowitz  
Alan Bloom  
Diane Bolman  
Susan Brait  
John T. Branscome  
Wallace Breitman and Monica Wohlferd  
Nanci Brewer  
Kathleen Broderson  
Louis Bruni  
Roger Burns  
Janet Buswell  
Jill Butler and Jim Wilsom  
Maria Rosario Caballero  
Carol Campbell  
Michael and Kathleen Capella  
Allan and Cathy Carstensen  
William D. Carswell  
Suzanne Cassell  
Chris Chang Weeks  
Donna Cherlin  
Natalie Clarkson  
Molly Cohen  
Nancy and Kevin Conway  
Susan Cunningham  
Chris Date  
Millie Davis  
Richard E. Davis  
Mel and Nancy Davison  
Vivian Dehay  
Sharon Delaney and Ralph Sobieski  
Candace A. Denley  
Diane DeRoo  
Russ and Judy Dieter  
Sharon and Daniel Dolan

Arvind and Aruna Donde  
Kathleen Dowdakin and Robert D. Fox  
Roelof and Carolina Drenth  
Roger Duba  
Laura Duggan  
Charlene Dunn  
Gail Enos  
eScrip  
Randi Farkas  
Ben Farnham  
Robert and Lisa Farnham  
Elaine Fenton  
Robert Feuer  
Ellin and Robert Firth  
Nancy Fitzpatrick  
Walt and Ella Forsiak  
Cheryl Franzini  
James and Susan Gale  
James Geagan and Cornelia Busse  
Martin Gerber  
Ray and Margot Gergus  
Bonnie Jean Germain  
Kenneth W. Gerver  
Carol Gorenberg  
Anne Gray  
Madelon Greenspan  
Jeanette Griffiths  
Gerry Groves  
Evelyn Gurevitch  
Lena Hahn-Schuman  
Joan Hall  
Linda Hall  
Mark Hall  
Dorothy Hansen  
Michael Haran  
Pauline Haro  
Elizabeth and Marie Heidorn  
Norman Hill  
Barbara Hirschfeld  
Ellen Hoffnagle and Terry Murphy  
Elizabeth Hogen  
Ned Hoke  
Richard and Jacqueline Holmes  
Ruth Horn  
Sage Howell  
Linda Inman  
Richard Jackson  
Marc Kahn  
Bert and Susanna Kaplan  
Mary L. Kimble  
Dennis Kimmel  
Ron King  
Greg Klein  
Wendy Krupnick  
Karen Kubrin and Susan Rode  
Dale D. Kuhn  
Rosamond Lagomarsino  
Sarah Beth Williams Lampi  
James and Denise Lara  
Barbara Larson  
Jeanette Lebell  
Betty LeDonne  
Karen Leet  
Jamie Lefevre  
Neil Levin  
Robert Leys  
Reta Lockert  
Lawrence Lossing and Ann Elston

Mary Luke  
Michele and Fred Luna  
Richard and Georgia Maher  
Kenneth Malik  
Mary Mariani  
Kay Marquet  
Julie Marth  
Gregory and Lucinda Martin  
Carol and Clifford Marvel  
Ann P. Maxwell  
Elizabeth McCarthy and Marko Castor  
Michael and Shelley McClure  
Maryann McCourt  
Linda McCready  
Margo T. McDowell  
Joan McFadden  
Robert and Nancy McFarland  
Stephanie McGill  
B. Elaine McHugh  
Ellen B. McKnight  
Gary McLaughlin  
Richard and Anabel Menefee  
Barbara and Gerald Meral  
William Milestone  
Kathryn Millar  
Jim Mitchell  
Dragana Monson  
Gene Moore  
Susan Moreschi  
Pat More  
Adele Mortensen  
Pam Nachtigall  
Patricia Nelson  
Richard O'Dea  
Jane Paneitz  
Jackie Parker  
Michele Parman  
Robert Pascal  
Nancy E. Pasky  
Sheri Pepper  
Cynthia B. Petersen  
Erica Hui Lan Petrowsky  
Richard Pharo II  
Douglas and Janice Pile  
Eric Polson  
Rory and Deb Pool  
Kathleen Pooler  
Ann Possinger  
Johanna and Robert Quigley  
Katherine W. Rabinowitz  
Kathleen Ramazzotti  
Daniel B. Reiter  
Anne Richards  
Al and Edith Rivasplata  
Robin Rosholt  
Agnes and Shike Rothblatt  
Helen and Robert Rowntree  
Mary Rutherford  
Barbara and Jay Salzman  
Roger and Deanna Sanborn  
Gladys Sawyer  
Barbara Schneiders  
Vreni Schnirman  
Lauren Scholnick  
John Schubert  
Kimberly and Clive Sharricks  
Joshua and Diane Shaw  
Anita Shields

Mercy Sidbury  
 Robert and Diane Silver  
 Linda Simmel  
 Calvin and Susan Simons  
 Don and Peggy Sloan  
 Ellen Solomon  
 Kathie Speicher  
 Anya Starovoytov  
 Jacqueline Steuer  
 Sandy and Bunny Stoddard  
 Winscott G. Stokes  
 Brian and Susan Stompe  
 David Michael Stone  
 Jeff Stucker  
 Peter and Marie Sullivan  
 Bettie Swan  
 Linda Swartz  
 Nancy Swartz  
 David Sweet  
 Christopher and Mary Szcsey  
 Tony Tamburello and Julie Traun  
 Mary Tanner and Duncan Reed  
 Jill and John Templeton  
 Naomi Tickle  
 Dwight and Janet Tracy  
 Kathleen Truax  
 Owen and Leslie Tuttle  
 Rosemary Uren  
 J. Frank and Edith Valle-Riestra  
 Bud Veliquette  
 Carol Vellutini  
 Rod and Vicki Walling  
 Lenny Weinstein  
 Suzanna Wellington  
 Michael West  
 Amy Whiteley  
 Susan Wielk  
 David and Doris Williams  
 Richard M. Williams  
 Patricia Wolfe  
 Wendy Wollish  
 Anna Young  
 Victoria Zahn

## MATCHING GIFTS

Adobe  
 Autodesk  
 Bank of America  
 Bank of the West  
 BlackRock, Inc.  
 Boeing  
 Chevron  
 Constellation Brands  
 GlaxoSmithKline  
 Google  
 IBM  
 Johnson & Johnson  
 Kaiser Permanente  
 Ketrion Financial, LLC  
 Keysight Technologies  
 Medtronic  
 Netflix  
 NVIDIA  
 Pfizer  
 PG&E  
 Shell Oil Company  
 The Wonderful Company  
 UBS Financial Services

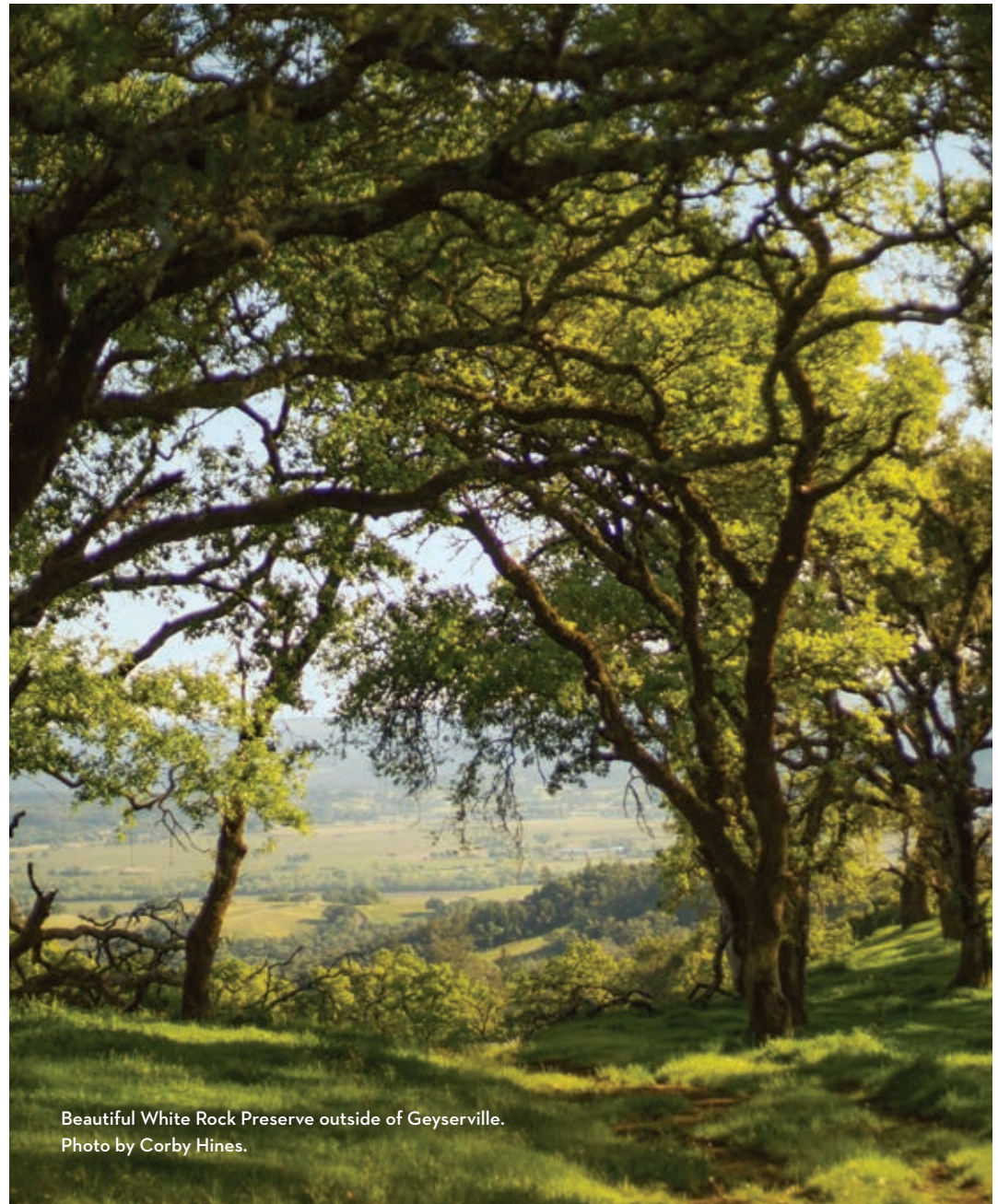
## IN KIND

Harold Appleton  
 Gerald Arrington  
 Atwood Ranch  
 Jane and Bernie Brenner  
 Cowgirl Creamery  
 Ron and Sandy Dodge  
 Dutton-Goldfield Winery  
 Duncan Dwelle  
 Elaine Bell Catering  
 Wendy Eliot and Michael Fitzgibbon  
 ESRI  
 Steve Garrison  
 Google  
 Hafner Vineyard  
 John Hanses  
 HenHouse Brewing Company  
 Innovative Screen Printing  
 Iron Horse Vineyards  
 Lagunitas Brewing Co.  
 Lynmar Estate  
 Melania Mahoney  
 Martinelli Winery & Vineyards  
 Mayo Family Winery  
 Matthew Muth  
 Pacific Market  
 Lucy Poindexter  
 Preston Farm and Winery  
 Redwood Hill Farm & Creamery  
 Robert Rue Vineyard & Winery  
 Sebastopol Hardware Center  
 Sturgeon's Mill  
 The Watershed Nursery  
 Viansa Sonoma  
 Dorothy Weicker  
 Work Horse Organic Agriculture Farm  
 Bradley and Isabelle Wyatt

## STUART CREEK STEWARDS

We recognize those who funded the pathways, interpretive signs and parking area of this restored stretch of Stuart Creek.

Darius and Sarah Anderson  
 Julie and Tom Atwood  
 Henry Beaumont  
 Judy Scotchmoor and Roland Gangloff  
 Yvonne Hall  
 Maud Hallin  
 Maggie Salenger and Peter Haywood  
 Steven and Troy Hightower  
 Ann Iverson  
 K2 Ranch  
 Lynne Deegan-McGraw  
 Mayo Family Winery  
 Bill and Jeanne Osterland  
 Sally and Toby Rosenblatt  
 Diana Sanson  
 Harvey and Deborah Shein  
 Meg and Tom Sokoloski  
 Stephanie Storms  
 Anne Teller  
 Sonoma Wine Country Weekend



Beautiful White Rock Preserve outside of Geyserville.  
 Photo by Corby Hines.



## THE LANDOWNER CIRCLE

The Landowner Circle is a special group of Sonoma Land Trust members who own and manage conservation easement properties.

Allison Ash and Marc Schwager  
BBRRBR, LLC  
Andrew Beath-Findlay  
Drew and Ellen Bradley  
Floramay and Richard Caletti  
Eugene and Chris Camozzi  
City of Petaluma  
City of Santa Rosa  
David Cowfer  
Bryan Dillon  
Estate Vineyards, LLC  
Dan and Cari Falk  
Leland and Danielle Falk  
Genoveva and Alberto Figueroa  
Elizabeth Frigerio  
Don Frank and Lynn Hamilton  
Don Hanesworth  
Richard Hoff and Margaret Gerner  
Tom and Caroline Hoyt  
Alex and Martha Hunt  
Chris Isaacs  
Eric Kleinbub  
LandPaths  
Margot and Robert Larsen  
Toby and Jerry Levine  
Berenice Nunez  
Occidental Arts and Ecology Center  
Will and Julie Parish  
Rajiv and Krutika Patel  
Terry Patten  
Ali Pearson and Bill Stockton  
Bill Phelps  
Jared and Velisa Pickard  
Michael and Victoria Rosauer  
Joan Roth and Will McCauley  
Lee Sandahl  
Jon and Catherine Sassin  
Joe and Denise Seminetta  
Jessica and Aaron Sittig  
Susan Manuel Smith  
Sonoma County Agricultural Preservation and Open Space District  
Sonoma County Regional Parks  
Michael Steele  
Summerfield Waldorf School and Farm  
Anne Teller  
David Thacher  
Carry and John Thacher  
Marimar and Cristina Torres  
Larry Wasem  
Wenchen Zhu

## CELEBRATING, HONORING AND REMEMBERING

The following friends of Sonoma Land Trust made gifts honoring exceptional individuals and celebrating special events.

**In Honor of Nancy Ackles**  
Susie Albrecht and Jim O'Neil

**In Honor of Nabeel Al-Shamma**  
Kirk Gould

**In Celebration of De and Bill Andersen**  
Ted Andersen and Kat Gledhill

**In Memory of Sir Arthur**  
Anonymous

**In Memory of Connie Beekley**  
Pamela Vanderbilt

**In Memory of Ralph W. Benson, Senior  
"Chief of the Fire"**  
John P. Strebel

**In Memory of Bessie**  
Kathleen Mugele

**In Memory of Haven Best**  
Annette and Craig Roth

**In Memory of James C. Bigelow**  
Sheila Bigelow

**In Memory of Kalliope Evangeline Boling**  
Leonard Mott  
Robert Rottmayer

**In Honor of Barbara and Fred Borsch**  
Nancy and Kyle Kirwan

**In Celebration of Louis Bottarini**  
Don and Lee Van Giesen

**In Memory of B.P. "Sonny" Boudreaux Jr.**  
David Boudreaux

**In Memory of Thomas Bova**  
Sally Vella

**In Honor of Carole and Pat Bowen**  
Nancy and Kyle Kirwan

**In Celebration of Cynthia (CB) Boyer**  
Kathleen Mugele

**In Memory of Michael Brocco**  
Lorraine A. Wedekind

**In Memory of Thomas Brownscombe**  
Mary Savage

**In Memory of H. Fred Burger**  
Stephen C. Burger

**In Memory of Bennett Burke**  
Elizabeth Lane

**In Memory of Betty Burridge**  
Ellen Blustein  
Earle and Susan Cummings  
Ted and Pat Eliot  
Jack and Deyea Harper  
Ralph and Marcia Johnson  
John and Carole Kolnes  
Lucy Kortum  
Peter and Olivia Leveque  
Joan and Richard Merriss  
Kathleen Mugele  
Mike Nelligan  
Benjamin Parmeter, MD  
Harry and Dee Richardson  
Teresita Salter-Haag  
Don and Marilyn Toms

**In Memory of Dominic Ciavonne**  
Linda Ciavonne

**In Memory of Mary Ann Ciavonne**  
Danell Pomin

**In Celebration of Jim Clark**  
Cristina Wadsworth

**In Memory of Ann Miller Cormack**  
Kenneth and Karen Adelson  
Robert Cormack  
Judith Davis  
Lynn and Joe Drake  
Jodi Epstein  
Martha and Kenneth Fischer  
Patricia Kim-Gable and Scott Gable  
David Kohlmeister and Amy Mortensen  
Lauren Scholnick

**In Honor of Bette and Marty Covington**  
Jackie Gardener

**In Memory of Richard E. Cowan**  
Shirley Cowan

**In Memory of Nancy B. Crosby**  
Don Crosby

**In Honor of Anita F. Das**  
Rob Das and Beth Berkson

**In Honor of Nancy and Henry DeNero**  
Nancy and Kyle Kirwan

**In Memory of Barbara DeVaughn**  
William DeVaughn

**In Memory of John George Doerr**  
Robin Doerr Russell

**In Honor of Sara Duryea**  
Nancy and Kyle Kirwan

**In Memory of Patricia Peters Eliot**  
Helen and Michael Bates  
Ralph Benson  
Sheri Cardo

## OUR PARTNER: SONOMA COUNTY AGRICULTURAL PRESERVATION AND OPEN SPACE DISTRICT

In 1990, Sonoma County voters approved the creation of the Sonoma County Agricultural Preservation and Open Space District. Since its formation, our county has enjoyed the best of both worlds: a nimble, nonprofit land trust partnering with a taxpayer-funded open space district generating nearly \$20 million in annual revenue for land protection.

This means that we almost always work together on our various projects, utilizing the strengths of both organizations. For example, in 2016, we raised over \$6 million for the District's protection, through the purchase of a conservation easement, of the 1,380-acre Howlett Ranch, one of the last intact old-growth redwood forests in the county. We are very excited about the District's "Vital Lands Initiative" and believe it will complement our strategic plan, resulting in even more collaborative conservation.

## FUNDING PARTNERS

Association of Bay Area Governments  
CalFire  
California Coastal Conservancy  
California Department of Conservation  
California Department of Fish and Wildlife  
Community Foundation Sonoma County:  
Cochran Fund/Environmental Education Grant/  
Sonoma Valley Fund  
Environmental Protection Agency  
Federal Highway Administration  
Fledgling Fund  
Geyserville Community Foundation  
Gordon and Betty Moore Foundation  
Impact100 Sonoma  
Natural Resources Conservation Service of the USDA:  
Environmental Quality Incentives Program (EQIP)  
North American Wetlands Conservation Act  
Resource Legacy Fund  
San Francisco Foundation  
Sonoma County Agricultural Preservation and  
Open Space District  
Sonoma Wine Country Weekend  
Vadasz Family Foundation  
Wildlife Conservation Board

Barbara Chasteen  
 Mickey S. Cooke  
 Gini Dunlap  
 Wendy Eliot and Michael Fitzgibbon  
 Richard and Carolyn Fogg  
 Charles and Terry Gast  
 Bruce Goldstein and Vicki Hill  
 Pete and Jill Golis  
 Dick and Mary Hafner  
 Priscilla Ireland and Dale Carroll  
 Robert and Linda Judd  
 K.A. Kennett  
 Janet Ketcham  
 Dave and Sharon Koehler  
 Virginia L. Koenig  
 Lucy Kortum  
 Robin Levander and Kyriakos Spentzos  
 Kate Lykins Brown  
 Joan and Richard Merriss  
 Gerald and Lilly Mugele  
 Kathleen Mugele  
 Mr. and Mrs. D.E. Mundell  
 Anna Narduzzi  
 Edith R. Newsome  
 John and Polly Post  
 Sarah and Ken Reid  
 Harry and Dee Richardson  
 Carol Robertson  
 Stephen and Martha Rosenblatt  
 Elisabeth Rossi  
 Kate Sater  
 Sarah Schnitger  
 Jean Schulz  
 Judy Scotchmoor and Roland Gangloff  
 John Sheehy and Laurie Szujevska  
 Denise Sobel and Tom Oczkowski  
 Margaret Spaulding  
 Anne Teller  
 Henry W. Wagner, III  
 Christine Wilder  
 Carol Williams  
 Mason Willrich

**In Memory of Denise Elliott**  
 Dwight and Janet Tracy

**In Memory of George and Phyllis Ellman**  
 Katie Alvord

**In Celebration of Julie English**  
 Mallory Smith

**In Celebration of Todd Everett**  
 Silas S. Everett

**In Memory of Henry and Emily Evers**  
 Virginia L. Koenig

**In Honor of Tom Falk**  
 Richard and Jeanne Jackson

**In Honor of Odette Fazzio**  
 Lawrence A. Wilcox

**In Honor of The Feyh Family**  
 Wes and Christine Blackwelder

**In Celebration of Karen Garcia**  
 Kathleen Mugele

**In Honor of Laurie Graham Griff**  
 Nancy and Kyle Kirwan

**In Memory of Gary Haag**  
 Teresita Salter-Haag

**In Honor of Martin Bernal Hafner and  
 Kate Bernal Hafner**  
 Grace Pollard Hafner

**In Celebration and Memory of Mary Hafner**

Bill and De Andersen  
 Alvin H. Baum, Jr.  
 Janelle Blanco  
 Tom and Margaret Bowman  
 Elizabeth Boyer and Harry Engel  
 Alma Boylan  
 Jane Breyer  
 Don and Susan Couch  
 Anthony Crabb and Barbara Grasseschi  
 Robert Clegg  
 Mike and Luci De Soto  
 Jon Dickson  
 Wendy Eliot and Michael Fitzgibbon  
 David and Denna Faloni  
 James Hafner Farrell  
 John Cole Farrell  
 Julianne Farrell  
 Jamy and Charles Faulhaber  
 Burton and Raleigh Fohrman  
 Bob and Marcia Fosberg  
 Jack Fritschi  
 Harold and Marion Garrett  
 Nancy Geary  
 Kenneth W. Gerver  
 Marcia and David Glassel  
 Deborah Goodman  
 Patricia Graffs  
 Elizabeth Hafner  
 Grace Pollard Hafner  
 Kate Hafner and Martin Bernal  
 Parke and Sarah Hafner  
 Scott Hafner and Bill Glenn  
 Lori Hafner  
 Albert G. Handelman, Esq.  
 Michael and Patricia Hayes  
 Ellen Hoffnagle and Terry Murphy  
 Joanne Hurlay  
 Tom and Marilyn Johnson  
 Dave and Sharon Koehler  
 Julie Lind  
 Colleen May  
 Bob Miller  
 W. Middleton O'Brien  
 Barbara Saarni Oddone and Pier Oddone  
 Michelle Paul  
 Steven Perkins  
 Tom and Christine Peterson  
 Betty Pigford  
 Julianne Rumsey  
 Lisa Sawyer  
 Janice and Ralph Sceales  
 Lia Shigemura and Helen Zia  
 Robert and Diane Silver  
 Louis and Jean Sloss

Oren Slozberg  
 Jim and Pat Stark  
 Hans and Gay Stern  
 Martin Takimoto  
 TricorBraun  
 Eric Walborsky  
 Dorothy Walker  
 James and Dorothy Walters  
 Jonas Weil  
 Nelson and Jane Weller  
 Sandy Wilson  
 Ginny and Bill Woolley  
 Alan Zeigler

**In Honor of Diane and Stan Hales**  
 Karen Hales

**In Honor of R. Stanton Hales**  
 Karen Hales

**In Honor of BJ and Terry Hanna**  
 Nancy and Kyle Kirwan

**In Celebration of Sandi Hansen**  
 Kathleen Mugele

**In Memory of Howard George Hanvey**  
 Robin Doerr Russell

**In Memory of Ellis Harris**  
 Susan Ackerman

**In Celebration of Carol and John Hauswirth**  
 Terry Peckham

**In Celebration of Michael and Patricia Hayes**  
 Moyra Moy

**In Memory of Frank and Mary Hockett**  
 Janice and Paul Chaffee

**In Celebration of Audrey Hulburt**  
 Allen and Susan Dollberg

**In Celebration of Trymon Hunter's 70th Birthday**  
 Kathleen Mugele

**In Memory of Jennie Jue**  
 Rebecca Butler

**In Honor of Harland and Loretta Kahn**  
 Kevin Kahn

**In Memory of Walter E. A. Kauwe**  
 Naydra Kauwe

**In Memory of Debby Kenrick**  
 Andrew and Betsy Withohn

**In Honor of Virginia and Fred Koenig**  
 Nancy and Kyle Kirwan

**In Memory of Dan Kraemer**  
 Fay Gallus

**In Memory of Bill Kortum**  
 Katie Alvord  
 Gerry Groves  
 Thomas Isaak



**KAYA HALPERN**  
 BAY CAMP DIRECTOR

*“The land has so much to teach us and every day it provides us with so many gifts, from drinking water and clean air to delicious wild strawberries and the sweet song of a meadowlark. I believe that by protecting the land, we are able to return those gifts.”*



**In Celebration of Janelle Kuhlman**  
Mary McInerney

**In Honor of Connie and Russell Lau**  
Nancy and Kyle Kirwan

**In Memory of Vincent P. Lawton**  
Kathleen Lawton

**In Memory of Kirsten Lindquist**  
Dennis Courtier  
Michael Hedley

**In Honor of Reta Lockert**  
Beth Harper  
Ruth Lombard and Trymon Hunter  
Kathleen Mugele  
Johanna Patri  
Jim Schratz and Carole Kelleher

**In Celebration of Iris (Ruth Lombard)**  
Kathleen Mugele

**In Honor of Steve Maass**  
Your Friends and Family at Oliver's Markets

**In Memory of Patty Mattson**  
Peter Elias and Mary Williams  
Dave and Sharon Koehler  
Craig and Caryol Mathiesen  
Harry and Dee Richardson

**In Celebration of Peter and Patty Mattson**  
Barry Petersen and Mary Nell Wolff

**In Honor of Doug McConnell**  
Barbara Meislin

**In Memory of Professor Barbara Kelley McLaughlin**  
Theodore and Lynda Chenoweth

**In Memory of William C. McMillan III**  
James Harwood

**In Memory of Agnes McTernan**  
Gerald Missey

**In Celebration of Gerry Mugele**  
Kathleen Mugele

**In Celebration of Riannon (Kathleen Mugele)**  
Reta Lockert  
Ruth Lombard and Trymon Hunter

**In Celebration of Michael Myers**  
Steve and Valerie Arelt

**In Memory of Judith Anne Nagle**  
Elisa Rosa

**In Memory of Alice Nordquist**  
Annette and Craig Roth

**In Memory of Yvonne Norrbom**  
Eric Norrbom

**In Memory of Everett Nourse**  
Jeanne Nourse

**In Memory of Julius and Bonnie Nuccio**  
Robin Doerr Russell

**In Memory of Ed Oliva**  
Annette and Craig Roth

**In Memory of Enrique Olmos**  
Darlene Barrett  
Aileen Schmidt

**In Honor of Bill Osterland**  
Steve and Wendy Smit

**In Celebration of Sunflower (Susanne Otteman)**  
Ruth Lombard and Trymon Hunter  
Kathleen Mugele

**In Honor of Joanne Palamountain**  
Nancy and Kyle Kirwan

**In Honor of Nicoletta and Giulio Pasinetti**  
Nancy and Kyle Kirwan

**In Celebration of Lizanne Pastore**  
Ellen Gill Pastore

**In Celebration of Lizanne Pastore and Will Bucklin**  
Ellen Gill Pastore

**In Memory of Marianne Schweitzer Perron**  
Mary L. Cabbage  
Linda Fisher and Leah Norwood  
Ken Kawaichi  
Greg and Liz Lutz

**In Honor of Kalia and Tres Petmecky**  
Nancy and Kyle Kirwan

**In Memory of Francesca Pierotti**  
Ralph and Tecla Pierotti

**In Honor of Michael Pinkston**  
Redwood Psychological Association

**In Memory of Calvin Platt**  
Ambassador Charles E. Cobb  
Douglas and Martha Duncan  
Edward W. Easton, Sr.  
Keith and Marlene Kaulum  
Denise and John Loomis  
Vera and Walter Obermeyer  
David Platt  
Janne Platt  
Peter Rummell  
Wendy A. Simon  
John Temple

**In Celebration of Canyon Laurel (Kathi Province)**  
Ruth Lombard and Trymon Hunter  
Kathleen Mugele

**In Memory of Donald B. Rice Jr.**  
Richard Peters

**In Honor of Harry and Dee Richardson**  
Michael and Lynn Davis

**In Memory of Jonathan Ruben**  
Richard and Anne Ruben

**In Memory of Ruby, a dog to remember**  
Kathleen Mugele

**In Memory of Eugene Russell**  
Thomas Higley

**In Honor of Barbara and Bill Schnieders**  
Nancy and Kyle Kirwan

**In Celebration of Julie and Eric Schreiber**  
Sarah Beth Williams Lampi

**In Celebration of Jean Schulz**  
The staff of the Charles M. Schulz Museum

**In Memory of Erica Demarest Shane**  
Dr. and Mrs. Michael Shane

**In Memory of Nancy D. Shelton**  
Ronald and Audrey Chapman  
Ann Foster  
Susan Hinstorff  
Emelie Tolley

**In Honor of Nancy Shepherd and Peter Poulada**  
Noveed Safipour

**In Honor of Elena and Jamie Shock**  
Nancy and Kyle Kirwan

**In Celebration of the Marriage of CB Singh and Trisha Rupani**  
Kathleen Mugele

**In Celebration of the Simmons Family**  
Kathleen Dowdakin and Robert D. Fox

**In Memory of Frank T. Slavens**  
Gordon and Tamara Boultsbee

**In Honor of Dr. Susan Smile**  
Gerald Camarata  
Anne French

**In Memory of Ernestine (Ernie) Smith**  
William and Sara Clegg

**In Memory of Matt Solem**  
The Solem Family

**In Memory of Rich Stallcup**  
Scott and Claudia Hein

**In Celebration of Lise Stevens**  
Helen Stevens

**In Memory of Bob Stone**  
Patricia Beus Daffurn

**In Memory of Terry G. Suetz**  
Monica Anne Menco

**In Memory of John A. (Jack) Swire**  
Marilyn Swire

**In Honor of Kathy Taft**  
Barbara Meislin

**In Honor of Jeri Taylor**  
Jackie Gardener

**In Celebration of Rick Theis's 70th birthday**  
John Wright

**In Honor of Anne Teller**  
Will Bucklin and Lizanne Pastore

**In Honor of Anni Tilt and Dave Arkin**  
Susan Zeni

**In Honor of Doug Tompkins**  
Sharon Ponsford and Chris Jones

**In Memory of Mary M. Traverso**  
Gordon and Tamara Boultsbee

**In Honor of Isabel Wadsworth**  
Nancy and Kyle Kirwan

**In Celebration and Memory of Lorraine Wedekind**  
Sally Vella

**In Celebration of Sue Weingarten**  
Kathleen Mugele

**In Memory of Ellis Whiting**  
Lavawn Whiting

**In Memory of Pat Wiggins**  
Katie Alvord

**In Honor of John Williamson**  
Deirdre Holbrook

**In Memory of Lynette Williamson**  
Carol Gorenberg

**In Honor of Cammy Wilson**  
Nancy and Kyle Kirwan

**In Celebration of Susan Wilson**  
Ellen and Wayne Krebs

**In Memory of Harry J. Wojcik**  
Kathleen Mugele

**In Memory of Joel Woodhull**  
Katie Alvord

**In Memory of Bruce Wright**  
Sally Vella

**In Celebration of the 2016 Writer's Retreat Guests**  
Jim Cole

**In Celebration of Anne Wurr's Birthday**  
Chloe Wurr  
Juliet Wurr

**In Honor of Bob and Dolores Zeni**  
Susan Zeni

**In Honor of Paul and Debi Zeni**  
Susan Zeni

**In Memory of Dominic Ziegler**  
Linda Ciavonne

**In Memory of Jan Zlotnick**  
Jeanette Lebel

“

*There is still  
a window  
of time.  
Nature can  
win if we  
give her  
a chance.*

— DR. JANE GOODALL

We would appreciate knowing of any mistakes or omissions so that we may promptly correct any errors. Please contact Maggie Stockel at [maggie@sonomalandtrust.org](mailto:maggie@sonomalandtrust.org) or (707) 526-6930 ext. 132 with any corrections.

## STATEMENT OF FINANCIAL POSITION AT DECEMBER 31

The amounts presented here are derived from the Sonoma Land Trust's financial statements for the years ending December 31, 2016 and December 31, 2015. Copies of the audited reports of financial statements are available upon request.

ASSETS	2016 (pre-audit)	2015 (audited)
Cash and cash equivalents	\$7,899,273	\$5,970,647
Investments	5,296,491	4,106,765
Contracts and other receivables	1,549,964	4,992,247
Pledges & bequests receivable	2,634,187	4,684,707
Deposits and other assets	86,438	52,486
Conservation lands and easements	24,754,047	36,255,906
Property and equipment (net)	644,410	742,249
Property subject to life estate	1,051,775	1,067,850
<b>Total Assets</b>	<b>\$43,916,585</b>	<b>\$57,872,857</b>

### LIABILITIES AND NET ASSETS

	2016 (pre-audit)	2015 (audited)
<b>Liabilities</b>		
Accounts payable and accrued expenses	\$860,136	\$3,357,538
Deferred revenue	1,459,228	1,688,710
Short-term note payable	400,644	400,000
Refundable advances	1,151,898	1,046,293
Use obligation – life estate	597,932	603,879
<b>Total Liabilities</b>	<b>\$4,469,838</b>	<b>\$7,096,420</b>
<b>Net Assets</b>		
Unrestricted		
Available for operations	\$6,784,325	\$8,168,467
Board designated – conservation projects	1,690,461	1,652,064
Investment in conservation lands	24,754,263	36,255,906
Total unrestricted net assets	33,229,049	46,076,437
Temporarily restricted net assets	6,217,698	4,700,000
<b>Total Net Assets</b>	<b>\$39,446,747</b>	<b>\$50,776,437</b>
<b>Total Liabilities and Net Assets</b>	<b>\$43,916,585</b>	<b>\$57,872,857</b>



An outing at Pole Mountain in the springtime.  
Photo by Richard McKee.

## STATEMENT OF ACTIVITIES FOR THE YEARS ENDED DECEMBER 31

REVENUE AND SUPPORT	2016 (pre-audit)	2015 (audited)	EXPENSES	2016 (pre-audit)	2015 (audited)
Contributions and grants	\$4,551,519	\$7,268,976	Projects and stewardship	\$3,789,725	\$7,363,221
In-kind contributions	61,645	13,546	Governance and administrative	1,261,369	1,112,911
Project income	1,433,393	4,954,883	Fundraising	937,361	730,030
Investment income	386,479	(103,392)	<b>Total Expenses</b>	<b>\$5,988,455</b>	<b>\$9,206,162</b>
Other income	–	89,501	Net income before land acquisitions & donations	\$444,581	\$3,017,352
<b>Total Revenue and Support</b>	<b>\$6,433,036</b>	<b>\$12,223,514</b>	Land acquisition expenses	(11,768,332)	(1,000,000)
			Land acquisition contributions (net)	–	950,000
			Change in value	(5,947)	5,715
			<b>Net income after land acquisitions &amp; donations</b>	<b>\$(11,329,698)</b>	<b>\$2,973,067</b>



## FINANCIAL STATEMENT, SHORT FISCAL YEAR JANUARY 1 – MARCH 31, 2017

In 2017, Sonoma Land Trust changed its fiscal year-end date from December 31 to March 31. This resulted in a short fiscal year of three months for January 1 to March 31, 2017. The change enables us to more reliably budget for future years based upon recent contribution history.

The amounts presented here are derived from the Sonoma Land Trust's financial statements for the short fiscal year.

### STATEMENT OF FINANCIAL POSITION AT MARCH 31

ASSETS	2017 (pre-audit)
Cash and cash equivalents	\$8,650,694
Investments	5,273,030
Contracts and other receivables	1,386,871
Pledges & bequests receivable	2,494,665
Deposits and other assets	115,443
Conservation lands and easements	23,041,083
Non-conservation property held for sale	610,000
Property and equipment, net	611,326
Property subject to life estate	1,047,756
<b>Total Assets</b>	<b>\$43,230,868</b>

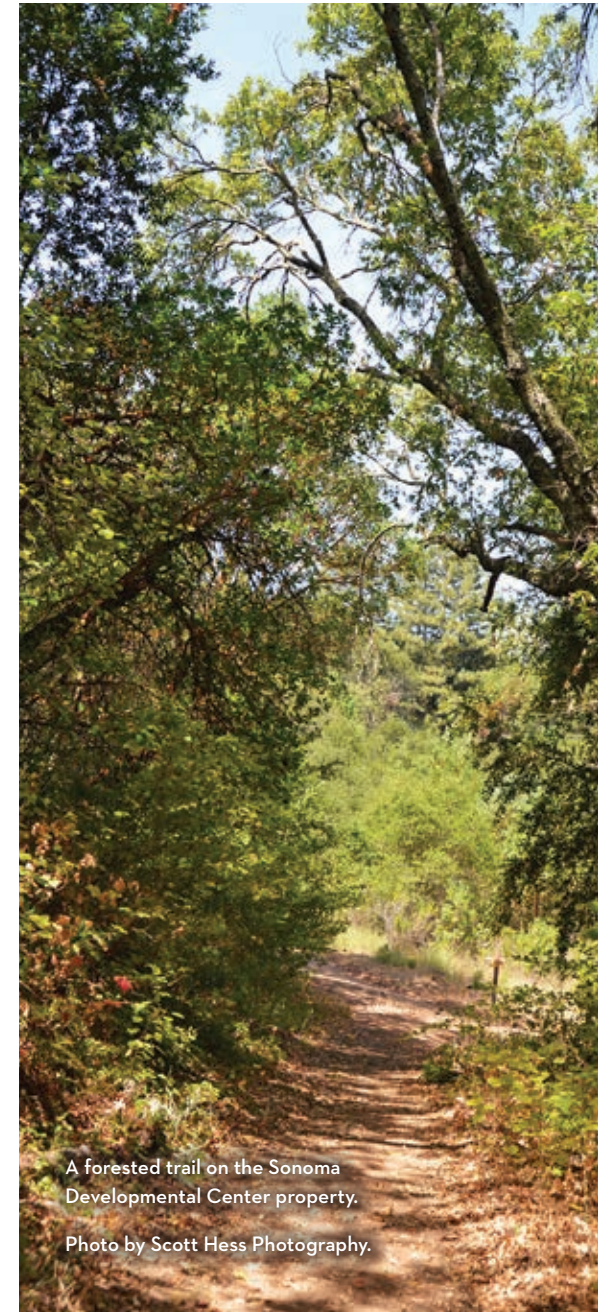
### LIABILITIES AND NET ASSETS

	2017 (pre-audit)
<b>Liabilities</b>	
Accounts payable and accrued expenses	\$782,521
Deferred revenue	1,449,891
Short-term note payable	421,221
Conditional gifts & grants	1,192,805
Use obligation – life estate	596,385
<b>Total Liabilities</b>	<b>\$4,442,823</b>
<b>Net Assets</b>	
Unrestricted	
Available for operations	\$6,630,206
Board designated – conservation projects	1,710,658
Investment in conservation lands	23,041,083
Total unrestricted net assets	31,381,947
Temporarily restricted net assets	7,406,098
<b>Total Net Assets</b>	<b>\$38,788,045</b>
<b>Total Liabilities and Net Assets</b>	<b>\$43,230,868</b>

### STATEMENT OF ACTIVITIES FOR THE YEAR ENDED MARCH 31

REVENUE AND SUPPORT	2017 (pre-audit)
Contributions and grants	\$1,548,660
In-kind contributions	610,375
Project income	76,647
Investment income	188,838
Other income	200
<b>Total Revenue and Support</b>	<b>\$2,424,720</b>

EXPENSES	2017 (pre-audit)
Projects and stewardship	\$950,493
Governance and administrative	248,428
Fundraising	184,716
<b>Total Expenses</b>	<b>\$1,383,637</b>
Net income before land acquisitions & donations	\$1,041,083
Land acquisition expenses	(1,700,000)
<b>Net income after land acquisitions &amp; donations</b>	<b>\$(658,917)</b>



A forested trail on the Sonoma Developmental Center property.

Photo by Scott Hess Photography.



## COMING UP

---

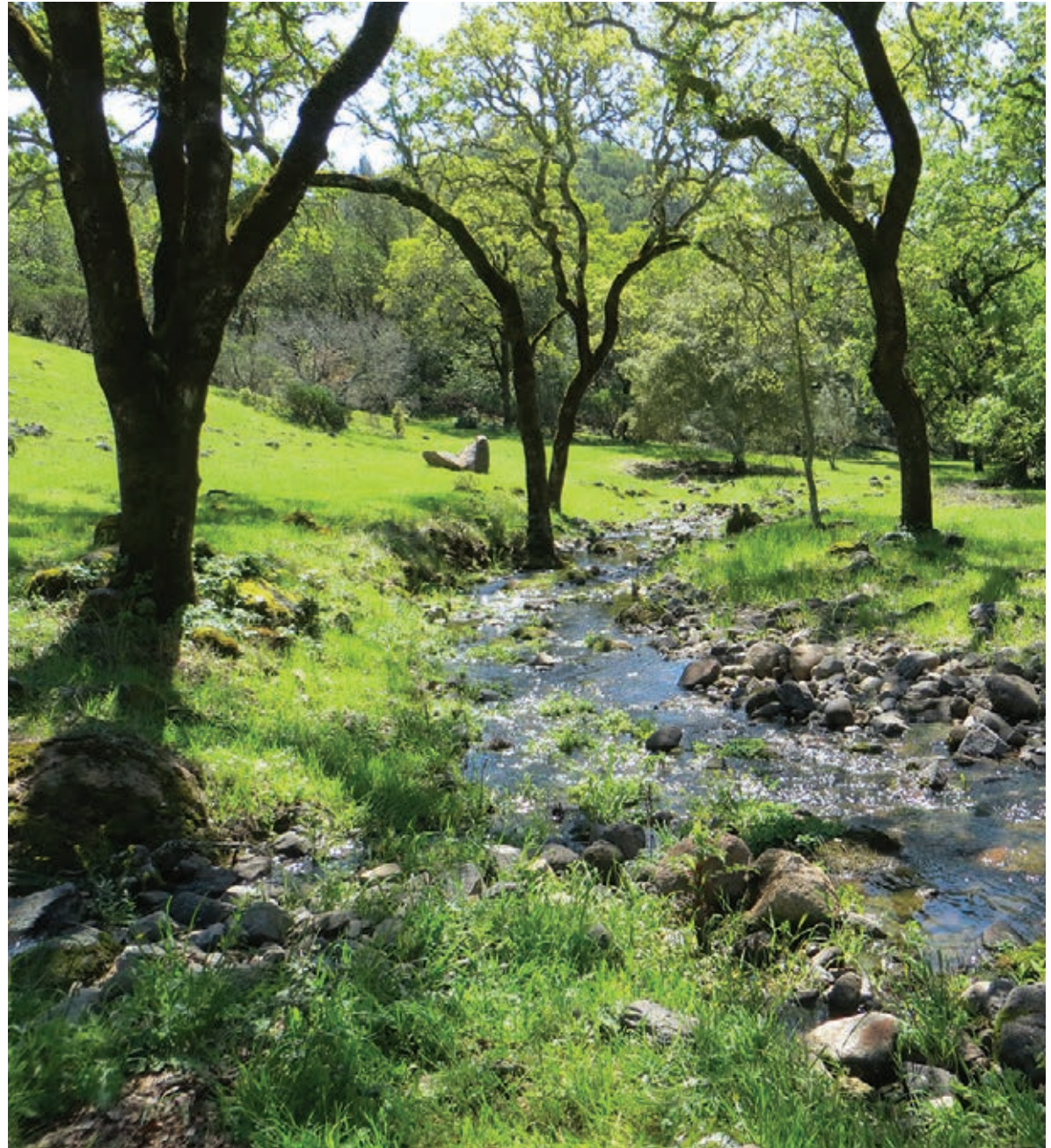
Our 40-year track record of protecting and stewarding land ensures that we never have a dearth of projects. Presently, we continue to work on bringing the McCormick project in the Mayacamas to a successful close. This stunning 654-acre property is adjacent to Sugarloaf Ridge State Park and boasts views all the way to the Sierras. When joined with the park, it will fill in a missing link in the Bay Area Ridge Trail for hikers and also preserve abundant habitat for wildlife.

In addition, our staff is working on additional projects in the Napa-to-Marín wildlife corridor, on the Russian River and throughout the county. Sorry we can't be more precise than that – land conservation is a delicate process requiring strict confidentiality more often than not. You will be the first to know when we are able to share!

With your help, we will continue to protect our clean air and water, wildlife corridors and giant redwoods, and we will help foster a closer connection between people and nature. The land is the heart of our community – thank you for protecting it.

**At right:** Bidwell Creek runs through Laufenburg Ranch as well as our Live Oaks Ranch property upstream. Our floodplain restoration projects will aid in the recovery of steelhead in this watershed.

Photo by Corby Hines.





## BOARD OF DIRECTORS

**Neal Fishman**, Chair  
Retired Public Official

**Denny Van Ness**, Vice Chair  
Venture Capital Advisor

**Robert Brent**, Secretary  
Retired Business Owner

**Marie Andel**  
Chief Administrative Officer

**Simon Blattner**  
Retired Business Executive

**Clay Clement**  
Attorney

**Ken Freeman**  
Winery Owner

**Scott Hafner**  
Business Executive

**Bryant Hichwa**  
Retired College Professor

**Steven Hightower**  
Retired Entrepreneur

**Hal Hinkle**  
Farmer

**Perry Karsen**  
Retired Business Executive

**Pete Mattson**  
Business Executive

**L. Timothy Portwood**  
Fundraising Consultant

**Ellie Rilla**  
Retired Agriculture Advisor

**Allison Sanford**  
Retired Administrator

**Judy Scotchmoor**  
Retired Science Educator

**Wendy Smit**  
Retired Businessperson

**Peter Van Alyea**  
Business Owner

## STAFF LIST

### Executive Department

**Dave Koehler**  
Executive Director

**Marian Vernon**  
Strategic Initiatives Analyst

### Acquisitions Department

**Wendy Eliot**  
Conservation Director

**Ann Johnston**  
Land Acquisition Program Manager

**Joseph Kinyon**  
GIS Manager

**John McCaull**  
Land Acquisition Program Manager

**Ariel Patashnik**  
Land Acquisition Program Manager

**Kendall Webster**  
Land Acquisition Project Manager

### Stewardship Department

**Bob Neale**  
Stewardship Director

**Shanti Edwards**  
Stewardship Project Manager

**Trevor George**  
Stewardship Project Manager

**Julian Meisler**  
Baylands Program Manager

**Tony Nelson**  
Sonoma Valley Program Manager

**Kyle Pinjuv**  
Stewardship Assistant Project Manager

**Crystal Simons**  
Conservation Easement Program Manager

### On the Land Team

**Ingrid Spetz**  
Outings Manager

**Corby Hines**  
Outings Guide

### Communications Department

**Sheri Cardo**  
Director of Communications

**Heather Ah San**  
Communications Coordinator

### Development Department

**Shannon Nichols**  
Director of Philanthropy

**Deirdre Holbrook**  
Major Gifts Officer

**Emily Klein**  
Business Program Manager

**Reta Lockert**  
Donor Relations Director

**Lisa Segraves**  
Development Assistant

**Maggie Stockel**  
Development Associate

### Finance & Administration Department

**Paul DeMarco**  
Director of Finance & Administration

**Karen Arrington**  
Volunteer Program Manager

**Frances Lum**  
Accounting Assistant

**Corinne Neuman**  
Controller

**Elizabeth Newton**  
Office Manager

**Linda Parker**  
Senior Accountant

Not sure whether your membership is current? Please contact Maggie Stockel at [maggie@sonomalandtrust.org](mailto:maggie@sonomalandtrust.org) or (707) 526-6930 ext. 132. We're happy to help you renew your support!

## OUR MISSION

Sonoma Land Trust protects scenic, natural, agricultural and open landscapes for the benefit of the community and future generations by:

- Developing long-term land protection strategies
- Promoting private and public funding for land and conservation
- Acquiring land and conservation easements
- Practicing stewardship, including the restoration of conservation properties
- Promoting a sense of place and a land ethic through activities, education and outreach



Cows at Live Oaks Ranch in the fall.  
Photo by Melania Mahoney.

Back cover: Having fun at Bay Camp at Sears Point Ranch. Photo by Lance Kuehne Photography.



822 Fifth Street  
Santa Rosa, CA 95404  
[sonomalandtrust.org](http://sonomalandtrust.org)

NONPROFIT  
U.S. Postage  
PAID  
Permit #751  
Santa Rosa, CA



*Live in the sunshine, swim  
the sea, drink the wild air.*

— RALPH WALDO EMERSON